



Mouse Monoclonal Antibody **Fibronectin** conjugated to Sepharose Beads

CatalogNo: **ANT8309-S**

Size 200ul

Storage Store at 4 °C for frequent use

### Description

This Antagene antibody is immobilized via covalent binding of primary amino groups to N-hydroxysuccinimide (NHS)-activated sepharose beads. It is useful for immunoprecipitation assays.

### **Fibronectin (ANT0076R) Rabbit mAb**

Formulation: 50% slurry in PBS pH 7.2 with 0.01mg NaN<sub>3</sub> preservative.

#### Host Species

- Rabbit

#### Reactivity

- Human, Mouse, Rat,

#### Applications

- WB, IHC, IF, IP, ELISA

#### MW

- 263kD (Calculated)
- 285kD (Observed)

#### Isotype

- IgG, Kappa

## Recommended Dilution Ratios

### IP

### Basic Information

Clonality	Monoclonal
-----------	------------

Clone Number	ANT0076R
--------------	----------

# Immunogen Information

**Specificity** Endogenous

**Gene name** FN1

**Protein Name** Fibronectin

Organism	Gene ID	UniProt ID
Human	<a href="#">2335;</a>	<a href="#">P02751;</a>
Mouse	<a href="#">14268;</a>	<a href="#">P11276;</a>
Rat		<a href="#">P04937;</a>

**Cellular Localization** Secreted

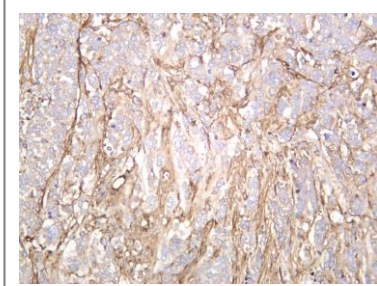
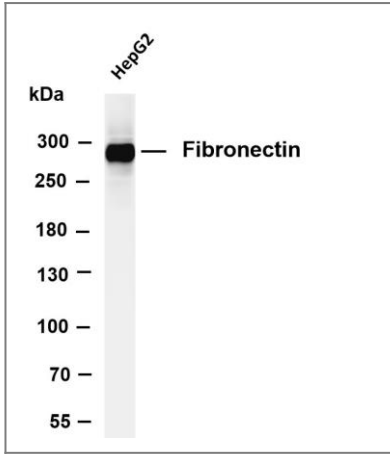
**Tissue specificity** Expressed in the inner limiting membrane and around blood vessels in the retina (at protein level) (PubMed:29777959). Plasma FN (soluble dimeric form) is secreted by hepatocytes. Cellular FN (dimeric or cross-linked multimeric forms), made by fibroblasts, epithelial and other cell types, is deposited as fibrils in the extracellular matrix. Ugl-Y1, Ugl-Y2 and Ugl-Y3 are found in urine (PubMed:17614963).

**Function** Alternative products:Additional isoforms seem to exist,developmental stage:Ugl-Y1, Ugl-Y2 and Ugl-Y3 are present in the urine from 0 to 17 years of age.,Disease:Defects in FN1 are the cause of glomerulopathy with fibronectin deposits type 2 (GFND2) [MIM:601894]; also known as familial glomerular nephritis with fibronectin deposits or fibronectin glomerulopathy. GFND is a genetically heterogeneous autosomal dominant disorder characterized clinically by proteinuria, microscopic hematuria, and hypertension that leads to end-stage renal failure in the second to fifth decade of life.,Function:Fibronectins bind cell surfaces and various compounds including collagen, fibrin, heparin, DNA, and actin. Fibronectins are involved in cell adhesion, cell motility, opsonization, wound healing, and maintenance of cell shape. Interaction with TNR mediates inhibition of cell adhesion and neurite outgrowth.,online information:Fibronectin entry,ANTM:Forms covalent cross-links mediated by a transglutaminase, such as F13A or TGM2, between a glutamine and the epsilon-amino group of a lysine residue, forming homopolymers and heteropolymers (e.g. fibrinogen-fibronectin, collagen-fibronectin heteropolymers).,PTM:It is not known whether both or only one of Thr-2064 and Thr-2065 are/is glycosylated.,PTM:Sulfated.,similarity:Contains 12 fibronectin type-I domains.,similarity:Contains 16 fibronectin type-III domains.,similarity:Contains 2 fibronectin type-II domains.,subunit:Mostly heterodimers or multimers of alternatively spliced variants, connected by 2 disulfide bonds near the carboxyl ends; to a lesser extent homodimers. Interacts with FBLN1, AMBP, TNR, LGALS3BP and COL13A1. Interacts with FBLN7.,tissue specificity:Plasma FN (soluble dimeric form) is secreted by hepatocytes. Cellular FN (dimeric or cross-linked multimeric forms), made by fibroblasts, epithelial and other cell types, is deposited as fibrils in the extracellular matrix. Ugl-Y1, Ugl-Y2 and Ugl-Y3 are found in urine.,

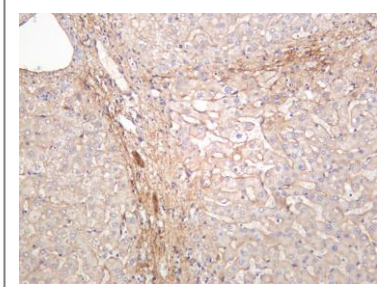
## Validation

### Data

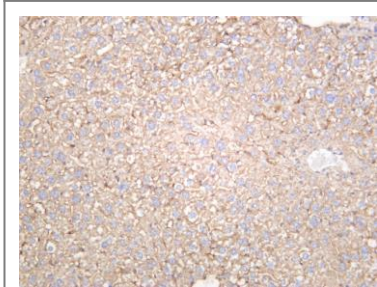
Various whole cell lysates were separated by 4-8% SDS-PAGE, and the membrane was blotted with anti-Fibronectin (ANT0076R) antibody. The HRPconjugated Goat anti-Rabbit IgG(H + L) antibody was used to detect the antibody. Lane 1: HepG2 Predicted band size: 263kDa Observed band size: 285kDa



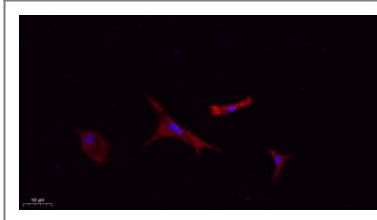
Human breast was stained with anti-Fibronectin (ANT0076R) rabbit antibody



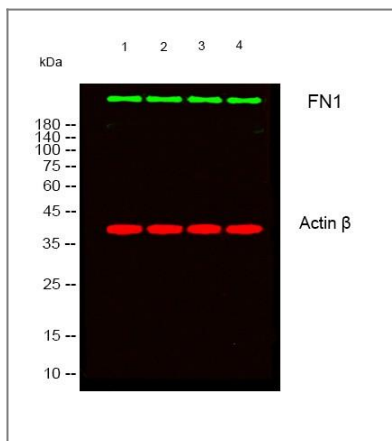
Human liver was stained with anti-Fibronectin (ANT0076R) rabbit antibody



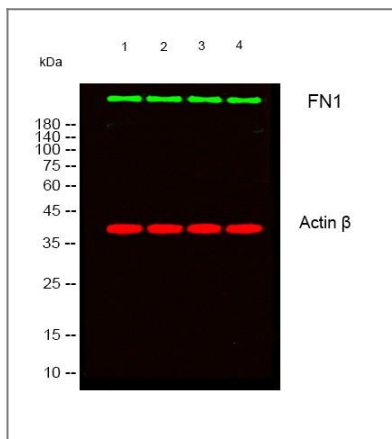
Mouse liver was stained with anti-Fibronectin (ANT0076R) rabbit antibody



Immunofluorescence analysis of A549. 1, primary Antibody(red) was diluted at 1:200(4°C overnight). 2, Goat Anti Rabbit IgG (H&L) - Alexa Fluor 594 Secondary antibody was diluted at 1:1000(room temperature, 50min).3, Picture B: DAPI(blue) 10min.



Western blot analysis of lysates from 1) 3T3 , 2) KB ,3) K562 ,4) 293T cells, (Green) primary antibody was diluted at 1:1000, 4° over night, secondary antibody(cat:RS23920)was diluted at 1:10000, 37° 1hour. (Red) Actin  $\beta$  Monoclonal Antibody(5B7) (cat:YM3028) antibody was diluted at 1:5000 as loading control, 4° over night,secondary antibody(cat:RS23710)was diluted at 1:10000, 37° 1hour.



Western blot analysis of lysates from 1) 3T3 , 2) KB ,3) K562 ,4) 293T cells, (Green) primary antibody was diluted at 1:1000, 4° over night, secondary antibody(cat:RS23920)was diluted at 1:10000, 37° 1hour. (Red) Actin  $\beta$  Monoclonal Antibody(5B7) (cat:YM3028) antibody was diluted at 1:5000 as loading control, 4° over night,secondary antibody(cat:RS23710)was diluted at 1:10000, 37° 1hour.

For Research use only, not for diagnostics and clinical use  
Contact Antagene Inc Tel 1-866-964-2589 Email: [info@antageneinc.com](mailto:info@antageneinc.com)