

## Chk2 (ANT0074R) Rabbit mAb

CatalogNo: ANT8308 **Recombinant** 

Formulation: PBS,50%glycerol,0.05%Proclin 300,0.05%BSA  
Quantity : 100 ug/vial

### Host Species

- Rabbit
- Human,Mouse,

### Reactivity

- WB,IHC,IF,IP,ELISA

### Applications

### MW

- 61kD (Calculated)
  - IgG,Kappa
- 61kD (Observed)

### Isotype

## Recommended Dilution Ratios

IHC 1:1000-1:4000

WB 1:2000-1:10000

IF 1:200-1:1000

ELISA 1:5000-1:20000

IP 1:50-1:200

## Storage

**Storage\*** -15°C to -25°C/1 year(Do not lower than -25°C)

## Basic Information

**Clonality** Monoclonal

**Clone Number** ANT0074R

## Target Information

Endogenous

Gene name CHEK2  
Protein Name Serine/threonine-protein kinase Chk2

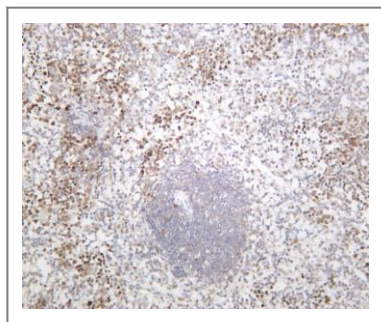
Organism	Gene ID	UniProt ID
Human	<a href="#">11200</a> ;	<a href="#">O96017</a> ;
Mouse	<a href="#">50883</a> ;	<a href="#">Q9Z265</a> ;

Cellular Localization Nucleus

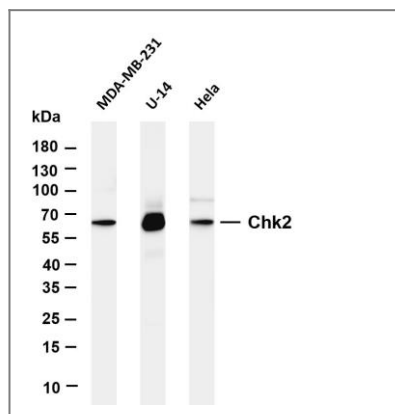
Tissue specificity High expression is found in testis, spleen, colon and peripheral blood leukocytes. Low expression is found in other tissues.

Function Catalytic activity:ATP + a protein = ADP + a phosphoprotein.,cofactor:Magnesium.,Disease:Defects in CHEK2 are associated with LiFraumeni syndrome 2 (LFS2) [MIM:609265]; a highly penetrant familial cancer phenotype usually associated with inherited mutations in p53/TP53.,Disease:Defects in CHEK2 are found in some patients with osteosarcoma (OSRC) [MIM:259500].,Disease:Defects in CHEK2 are found in some patients with prostate cancer (CaP) [MIM:176807].,enzyme regulation:Rapidly phosphorylated on Thr-68 by MLTK in response to DNA damage and to replication block. Kinase activity is also up-regulated by autophosphorylation.,Function:Regulates cell cycle checkpoints and apoptosis in response to DNA damage, particularly to DNA double-strand breaks. Inhibits CDC25C phosphatase by phosphorylation on 'Ser-216', preventing the entry into mitosis. May also play a role in meiosis. Regulates the TP53 tumor suppressor through phosphorylation at 'Thr-18' and 'Ser-20'. ,similarity:Belongs to the protein kinase superfamily. CAMK Ser/Thr protein kinase family. CHK2 subfamily.,similarity:Contains 1 FHA domain.,similarity:Contains 1 protein kinase domain.,subcellular location:Isoform 10 is present throughout the cell.,tissue specificity:High expression is found in testis, spleen, colon and peripheral blood leukocytes. Low expression is found in other tissues.,

## Validation Data



Mouse spleen was stained with anti-Chk2 (ANT0074R) rabbit antibody



Various whole cell lysates were separated by 4-20% SDS-PAGE, and the membrane was blotted with anti-Chk2 (ANT0074R) antibody. The HRPconjugated Goat anti-Rabbit IgG(H + L) antibody was used to detect the antibody. Lane 1: MDA-MB-231 Lane 2: U-14 Lane 3: HeLa Predicted band size: 61kDa Observed band size: 61kDa

For Research use only, not for diagnostics and clinical use  
Contact Antagene Inc Tel 1-866-964-2589 Email: [info@antageneinc.com](mailto:info@antageneinc.com)