



## Mouse Monoclonal Antibody **Chk2** conjugated to Sepharose Beads

CatalogNo: **ANT8308-S**

Size 200ul

Storage Store at 4 °C for frequent use

### Description

This Antagene antibody is immobilized via covalent binding of primary amino groups to N-hydroxysuccinimide (NHS)-activated sepharose beads. It is useful for immunoprecipitation assays.

### **Chk2 (ANT0074R) Rabbit mAb**

Formulation: 50% slurry in PBS pH 7.2 with 0.01mg NaN<sub>3</sub> preservative.

#### Host Species

- Rabbit
- Human, Mouse,

#### Reactivity

- WB, IHC, IF, IP, ELISA

#### Applications

#### MW

- 61kD (Calculated)
  - IgG, Kappa
- 61kD (Observed)

#### Isotype

## **Recommended Dilution Ratios**

IP

### **Basic Information**

#### Clonality

Monoclonal

Clone Number      ANT0074R

Immunogen Information

Specificity      Endogenous

Gene name      CHEK2

Protein Name      Serine/threonine-protein kinase Chk2

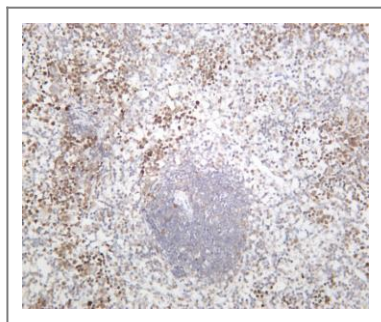
Organism	Gene ID	UniProt ID
Human	<a href="#">11200</a> ;	<a href="#">O96017</a> ;
Mouse	<a href="#">50883</a> ;	<a href="#">Q9Z265</a> ;

Cellular Localization      Nucleus

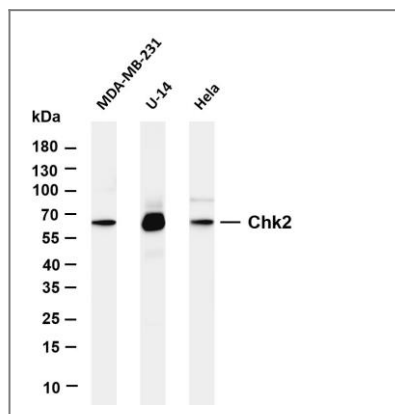
Tissue specificity      High expression is found in testis, spleen, colon and peripheral blood leukocytes. Low expression is found in other tissues.

Function      Catalytic activity:ATP + a protein = ADP + a phosphoprotein.,cofactor:Magnesium.,Disease:Defects in CHEK2 are associated with LiFraumeni syndrome 2 (LFS2) [MIM:609265]; a highly penetrant familial cancer phenotype usually associated with inherited mutations in p53/TP53.,Disease:Defects in CHEK2 are found in some patients with osteosarcoma (OSRC) [MIM:259500].,Disease:Defects in CHEK2 are found in some patients with prostate cancer (CaP) [MIM:176807].,enzyme regulation:Rapidly phosphorylated on Thr-68 by MLTK in response to DNA damage and to replication block. Kinase activity is also up-regulated by autophosphorylation.,Function:Regulates cell cycle checkpoints and apoptosis in response to DNA damage, particularly to DNA double-strand breaks. Inhibits CDC25C phosphatase by phosphorylation on 'Ser-216', preventing the entry into mitosis. May also play a role in meiosis. Regulates the TP53 tumor suppressor through phosphorylation at 'Thr-18' and 'Ser-20'. ,similarity:Belongs to the protein kinase superfamily. CAMK Ser/Thr protein kinase family. CHK2 subfamily.,similarity:Contains 1 FHA domain.,similarity:Contains 1 protein kinase domain.,subcellular location:Isoform 10 is present throughout the cell.,tissue specificity:High expression is found in testis, spleen, colon and peripheral blood leukocytes. Low expression is found in other tissues.,

## Validation Data



Mouse spleen was stained with anti-Chk2 (ANT0074R) rabbit antibody



Various whole cell lysates were separated by 4-20% SDS-PAGE, and the membrane was blotted with anti-Chk2 (ANT0074R) antibody. The HRPconjugated Goat anti-Rabbit IgG(H + L) antibody was used to detect the antibody. Lane 1: MDA-MB-231 Lane 2: U-14 Lane 3: HeLa Predicted band size: 61kDa Observed band size: 61kDa

For Research use only, not for diagnostics and clinical use  
Contact Antagene Inc Tel 1-866-964-2589 Email: [info@antageneinc.com](mailto:info@antageneinc.com)