



Mouse Monoclonal Antibody **Chk2** conjugated to Sepharose Beads

CatalogNo: **ANT8308-M**

Size 200ul

Storage Store at 4 °C for frequent use

Description

This Antagene antibody is immobilized by the covalent reaction of hydrazinonicotinamide-modified antibody with formylbenzamide-modified beads. It is useful for immunoprecipitation.

Chk2 (ANT0074R) Rabbit mAb

Formulation: Each vial contains 1mg/ml Magnetic Bead in PBS, pH 7.2, 0.05mg ANaN3.

Host Species

- Rabbit
- Human, Mouse,

Reactivity

- WB, IHC, IF, IP, ELISA

Applications

MW

- 61kD (Calculated)
 - IgG, Kappa
- 61kD (Observed)

Isotype

Recommended Dilution Ratios

IP

Basic Information

Clonality

Monoclonal

Clone Number ANT0074R

Immunogen Information

Specificity Endogenous

Gene name CHEK2

Protein Name Serine/threonine-protein kinase Chk2

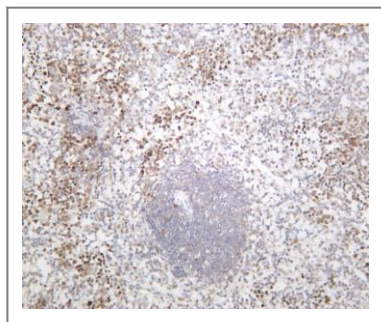
Organism	Gene ID	UniProt ID
Human	11200 ;	O96017 ;
Mouse	50883 ;	Q9Z265 ;

Cellular
Localization Nucleus

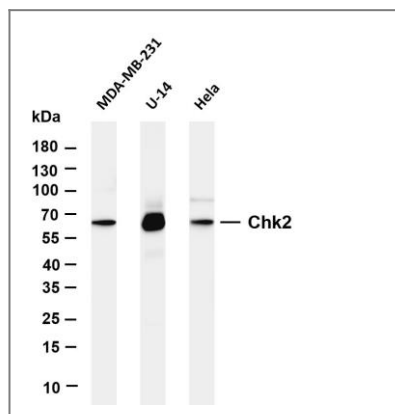
Tissue specificity High expression is found in testis, spleen, colon and peripheral blood leukocytes. Low expression is found in other tissues.

Function Catalytic activity:ATP + a protein = ADP + a phosphoprotein.,cofactor:Magnesium.,Disease:Defects in CHEK2 are associated with LiFraumeni syndrome 2 (LFS2) [MIM:609265]; a highly penetrant familial cancer phenotype usually associated with inherited mutations in p53/TP53.,Disease:Defects in CHEK2 are found in some patients with osteosarcoma (OSRC) [MIM:259500].,Disease:Defects in CHEK2 are found in some patients with prostate cancer (CaP) [MIM:176807].,enzyme regulation:Rapidly phosphorylated on Thr-68 by MLTK in response to DNA damage and to replication block. Kinase activity is also up-regulated by autophosphorylation.,Function:Regulates cell cycle checkpoints and apoptosis in response to DNA damage, particularly to DNA double-strand breaks. Inhibits CDC25C phosphatase by phosphorylation on 'Ser-216', preventing the entry into mitosis. May also play a role in meiosis. Regulates the TP53 tumor suppressor through phosphorylation at 'Thr-18' and 'Ser-20'. ,similarity:Belongs to the protein kinase superfamily. CAMK Ser/Thr protein kinase family. CHK2 subfamily.,similarity:Contains 1 FHA domain.,similarity:Contains 1 protein kinase domain.,subcellular location:Isoform 10 is present throughout the cell.,tissue specificity:High expression is found in testis, spleen, colon and peripheral blood leukocytes. Low expression is found in other tissues.,

Validation Data



Mouse spleen was stained with anti-Chk2 (ANT0074R) rabbit antibody



Various whole cell lysates were separated by 4-20% SDS-PAGE, and the membrane was blotted with anti-Chk2 (ANT0074R) antibody. The HRPconjugated Goat anti-Rabbit IgG(H + L) antibody was used to detect the antibody. Lane 1: MDA-MB-231 Lane 2: U-14 Lane 3: HeLa Predicted band size: 61kDa Observed band size: 61kDa

For Research use only, not for diagnostics and clinical use
Contact Antagene Inc Tel 1-866-964-2589 Email: info@antageneinc.com