



Ly6g (ANT0073R) Rabbit mAb

CatalogNo: ANT8307 **Recombinant** 

Formulation: PBS,50%glycerol,0.05%Proclin 300,0.05%BSA
Quantity : 100 ug/vial

Host Species

- Rabbit
- Mouse,
- WB,IHC,IF,IP,ELISA

Reactivity

Applications

MW

- 14kD (Calculated)
- IgG,Kappa
- 14kD (Observed)

Isotype

Recommended Dilution Ratios

IHC 1:1000-1:4000

WB 1:1000-1:5000

IF 1:200-1:1000

ELISA 1:5000-1:20000

IP 1:50-1:200

Storage

Storage* -15°C to -25°C/1 year(Do not lower than -25°C)

Basic Information

Clonality Monoclonal

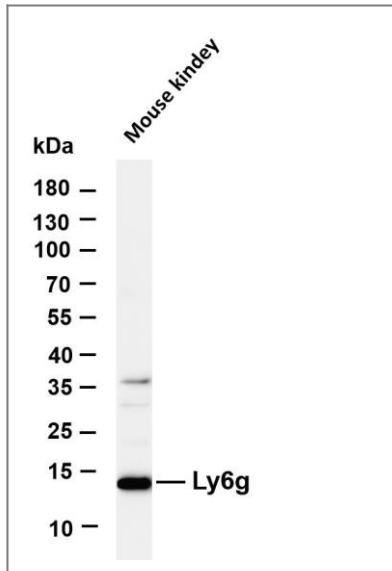
Clone Number ANT0073R

Endogenous

Target Information

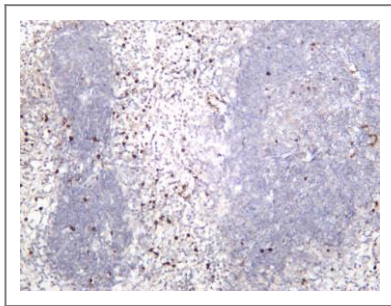
Gene name	Ly6g		
Protein Name	Lymphocyte antigen 6G;Ly-6G;Ly-6G.1;		
	Mouse	546644 ;	P35461 ;
Cellular Localization	Membrane		
Tissue specificity	Expressed in bone marrow.		
Function	Ly6G is a GPI-anchored protein, that is also known as the myeloid differentiation antigen Gr1. The antigen is transiently expressed on monocytes in the bone marrow. The level of antigen expression in the bone marrow directly correlates with granulocyte differentiation and maturation. Ly6G is expressed predominantly on neutrophils, also in a subset of eosinophils, differentiating pre-monocytes, and plasmacytoid dendritic cells.		

Validation Data



Various whole cell lysates were separated by 4-20% SDS-PAGE, and the membrane was blotted with anti-Ly6g (ANT0073R) antibody. The HRPconjugated Goat anti-Rabbit IgG(H + L) antibody was used to detect the antibody. Lane 1: Mouse kidney Predicted band size: 14kDa Observed band size: 14kDa

Mouse spleen was stained with anti-Ly6g (ANT0073R) rabbit antibody



For Research use only, not for diagnostics and clinical use
Contact Antagene Inc Tel 1-866-964-2589 Email: info@antageneinc.com