



Mouse Monoclonal Antibody **Ly6g** conjugated to Sepharose Beads

CatalogNo: **ANT8307-M**

Size 200ul

Storage Store at 4 °C for frequent use

Description

This Antagene antibody is immobilized by the covalent reaction of hydrazinonicotinamide-modified antibody with formylbenzamide-modified beads. It is useful for immunoprecipitation.

Ly6g (ANT0073R) Rabbit mAb

Formulation: Each vial contains 1mg/ml Magnetic Bead in PBS, pH 7.2, 0.05mg ANaN3.

Host Species

- Rabbit
- Mouse,
- WB,IHC,IF,IP,ELISA

Reactivity

Applications

MW

- 14kD (Calculated)
- IgG,Kappa
- 14kD (Observed)

Isotype

Recommended Dilution Ratios

IP

Basic Information

Clonality Monoclonal

Clone Number ANT0073R

Immunogen Information

Specificity Endogenous

Target Information

Gene name Ly6g

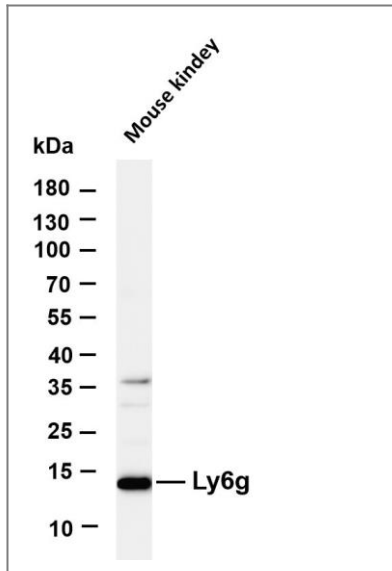
Protein Name Lymphocyte antigen 6G;Ly-6G;Ly-6G.1;
Mouse [546644](#); [P35461](#);

Cellular Membrane
Localization

Tissue specificity Expressed in bone marrow.

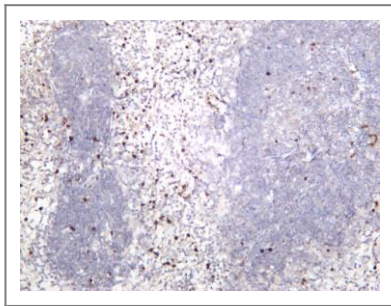
Function Ly6G is a GPI-anchored protein, that is also known as the myeloid differentiation antigen Gr1. The antigen is transiently expressed on monocytes in the bone marrow. The level of antigen expression in the bone marrow directly correlates with granulocyte differentiation and maturation. Ly6G is expressed predominantly on neutrophils, also in a subset of eosinophils, differentiating pre-monocytes, and plasmacytoid dendritic cells.

Validation Data



Various whole cell lysates were separated by 4-20% SDS-PAGE, and the membrane was blotted with anti-Ly6g (ANT0073R) antibody. The HRPconjugated Goat anti-Rabbit IgG(H + L) antibody was used to detect the antibody. Lane 1: Mouse kidney Predicted band size: 14kDa Observed band size: 14kDa

Mouse spleen was stained with anti-Ly6g (ANT0073R) rabbit antibody



For Research use only, not for diagnostics and clinical use
Contact Antagene Inc Tel 1-866-964-2589 Email: info@antageneinc.com