



## Mouse Monoclonal Antibody **CD45** conjugated to Sepharose Beads

CatalogNo: **ANT8305-S**

Size 200ul

Storage Store at 4 °C for frequent use

### Description

This Antagene antibody is immobilized via covalent binding of primary amino groups to N-hydroxysuccinimide (NHS)-activated sepharose beads. It is useful for immunoprecipitation assays.

### **CD45 (ANT0071R) Rabbit mAb**

Formulation: 50% slurry in PBS pH 7.2 with 0.01mg NaN<sub>3</sub> preservative.

#### Host Species

- Rabbit

#### MW

- 147kD (Calculated)
- 240-200kD (Observed)

#### Reactivity

- Human,

#### Isotype

- IgG,Kappa

#### Applications

- WB,IHC,IF,IP,ELISA

## Recommended Dilution Ratios

### IP

## Basic Information

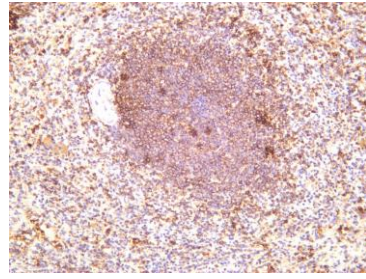
Clonality	Monoclonal
-----------	------------

Clone Number	ANT0071R
--------------	----------

# Immunogen Information

Specificity	Endogenous		
Gene name	ANTPRC		
Protein Name	Receptor-type tyrosine-protein phosphatase C (Leukocyte common antigen) (L-CA) (T200) (CD antigen CD45)		
	Organism	Gene ID	UniProt ID
	Human	<a href="#">5788</a> ;	<a href="#">P08575</a> ;
Cellular Localization	Membrane		
Tissue specificity	Isoform 1: Detected in thymocytes. Isoform 2: Detected in thymocytes. Isoform 3: Detected in thymocytes. Isoform 4: Not detected in thymocytes. Isoform 5: Detected in thymocytes. Isoform 6: Not detected in thymocytes. Isoform 7: Detected in thymocytes. Isoform 8: Not detected in thymocytes.		
Function	<p>Alternative products:At least 8 isoforms are produced,Catalytic activity:Protein tyrosine phosphate + H(2)O = protein tyrosine + phosphate.,Disease:Defects in PTPRC are a cause of severe combined immunodeficiency autosomal recessive T-cell-negative/B-cellpositive/NK-cell-positive (T(-)B(+)NK(+)SCID) [MIM:608971]. SCID refers to a genetically and clinically heterogeneous group of rare congenital disorders characterized by impairment of both humoral and cell-mediated immunity, leukopenia, and low or absent antibody levels. Patients with SCID present in infancy with recurrent, persistent infections by opportunistic organisms. The common characteristic of all types of SCID is absence of T-cell-mediated cellular immunity due to a defect in T-cell development.,Disease:Genetic variations in PTPRC are involved in multiple sclerosis susceptibility (MS) [MIM:126200]. MS is a neurodegenerative disorder characterized by the gradual accumulation of focal plaques of demyelination particularly in the periventricular areas of the brain. Peripheral nerves are not affected. Onset usually in third or fourth decade with intermittent progression over an extended period. The cause is still uncertain.,Domain:The first PTPase domain interacts with SKAP1.,Function:Required for T-cell activation through the antigen receptor. The first PTPase domain has enzymatic activity, while the second one seems to affect the substrate specificity of the first one. Upon T-cell activation, recruits an dephosphorylates SKAP1 and FYN.,online information:CD45 entry,online information:PTPRC mutation db,PTM:Heavily Nand O-glycosylated.,similarity:Belongs to the protein-tyrosine phosphatase family. Receptor class 1/6 subfamily.,similarity:Contains 2 fibronectin type-III domains.,similarity:Contains 2 tyrosine-protein phosphatase domains.,subunit:Binds GANAB and PRKCSH (By similarity). Interacts with SKAP1.,</p>		

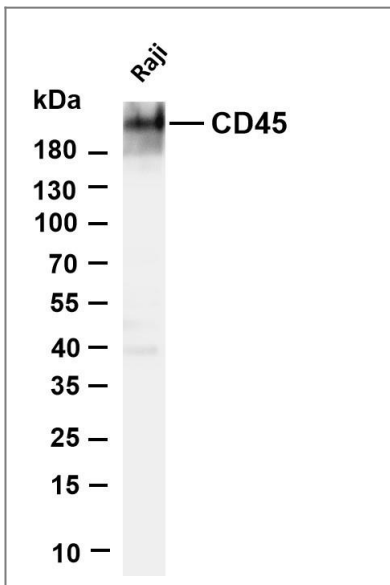
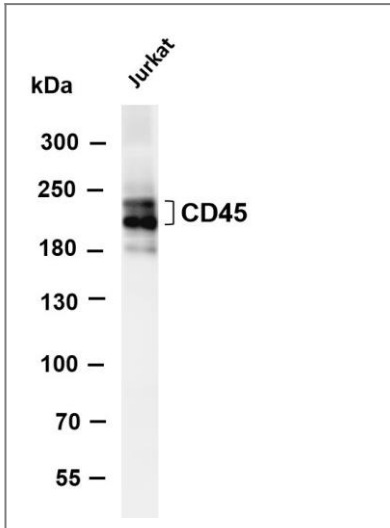
## Validation Data



Human spleen was stained with anti-CD45 (ANT0071R)

rabbit antibody

Various whole cell lysates were separated by 4-8% SDS-PAGE, and the membrane was blotted with anti-CD45 (ANT0071R) antibody. The HRPconjugated Goat anti-Rabbit IgG(H + L) antibody was used to detect the antibody. Lane 1: Jurkat Predicted band size: 147kDa Observed band size: 240-200kDa



Various whole cell lysates were separated by 4-8% SDS-PAGE, and the membrane was blotted with anti-CD45 (ANT0071R) antibody. The HRPconjugated Goat anti-Rabbit IgG(H + L) antibody was used to detect the antibody. Lane 1: Jurkat Predicted band size: 147kDa Observed band size: 240-200kDa

For Research use only, not for diagnostics and clinical use  
Contact Antagene Inc Tel 1-866-964-2589 Email: [info@antageneinc.com](mailto:info@antageneinc.com)