



Mouse Monoclonal Antibody **TAGLN** conjugated to Sepharose Beads

CatalogNo: **ANT8303-M**

Size 200ul

Storage Store at 4 °C for frequent use

Description

This Antagene antibody is immobilized by the covalent reaction of hydrazinonicotinamide-modified antibody with formylbenzamide-modified beads. It is useful for immunoprecipitation.

TAGLN (ANT0069R) Rabbit mAb

Formulation: Each vial contains 1mg/ml Magnetic Bead in PBS, pH 7.2, 0.05mg ANaN3.

Host Species

- Rabbit
- Human, Mouse, Rat,

Reactivity

- WB, IHC, IF, IP, ELISA

Applications

MW

- 23kD (Calculated)
- 23kD (Observed)
- IgG, Kappa

Isotype

Recommended Dilution Ratios

IP

Basic Information

Clonality

Monoclonal

Clone Number ANT0069R

Immunogen Information

Specificity Endogenous

Gene name TAGLN SM22 WS3-10

Protein Name Transgelin (22 kDa actin-binding protein) (Protein WS3-10) (Smooth muscle protein 22alpha) (SM22-alpha)

Organism	Gene ID	UniProt ID
Human	6876;	Q01995;
Mouse		P37804;
Rat		P31232;

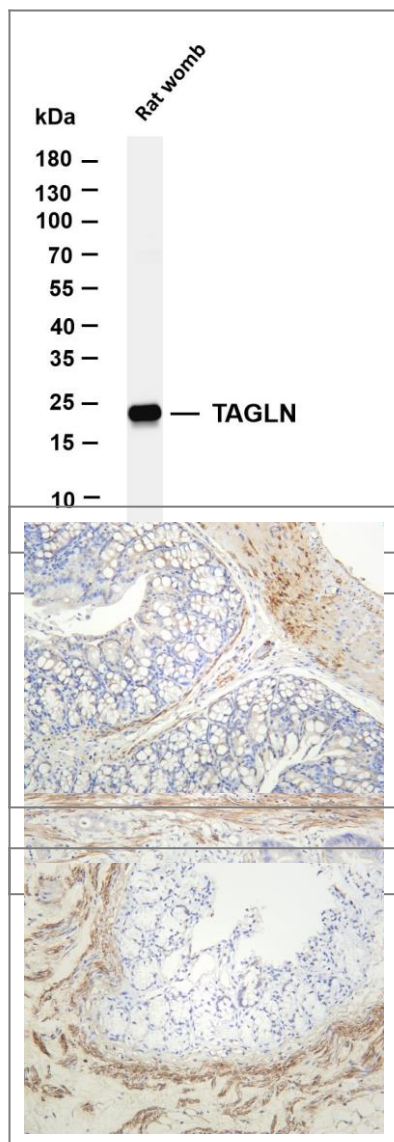
Cellular Cytoplasm
Localization

Tissue specificity Aorta,Bone marrow,Brain,Fibroblast,Human small intestine,Peripheral blood,Uterus,White Matt

Function Function:Actin cross-linking/gelling protein (By similarity). Involved in calcium interactions and contractile properties of the cell that may contribute to replicative senescence.,induction:Overexpressed in senescent human fibroblasts.,similarity:Belongs to the calponin family.,similarity:Contains 1 calponin-like repeat.,similarity:Contains 1 CH (calponin-homology) domain.,



Validation Data



Various whole cell lysates were separated by 4-20% SDS-PAGE, and the membrane was blotted with anti-TAGLN (ANT0069R) antibody. The HRPconjugated Goat anti-Rabbit IgG(H + L) antibody was used to detect the antibody. Lane 1: Rat womb Predicted band size: 23kDa Observed band size: 23kDa

Human colon carcinoma was stained with anti-TAGLN (ANT0069R) rabbit antibody
Mouse colon was stained with anti-TAGLN (ANT0069R) rabbit antibody

Rat colon was stained with anti-TAGLN (ANT0069R) rabbit antibody

For Research use only, not for diagnostics and clinical use
Contact Antagene Inc Tel 1-866-964-2589 Email: info@antageneinc.com