



Mouse Monoclonal Antibody **S100B** conjugated to Sepharose Beads

CatalogNo: **ANT8297-M**

Size 200ul

Storage Store at 4 °C for frequent use

### Description

This Antagene antibody is immobilized by the covalent reaction of hydrazinonicotinamide-modified antibody with formylbenzamide-modified beads. It is useful for immunoprecipitation.

**S100B (ANT0061R) Rabbit mAb**

Formulation: Each vial contains 1mg/ml Magnetic Bead in PBS, pH 7.2, 0.05mg ANaN3.

### Host Species

- Rabbit
- Human, Mouse, Rat,

### Reactivity

- WB, IHC, IF, IP, ELISA

### Applications

### MW

- 11kD (Calculated)
  - IgG, Kappa
- 11kD (Observed)

### Isotype

## Recommended Dilution Ratios

### IP

## Basic Information

### Clonality

Monoclonal

Clone Number      ANT0061R

**Immunogen Information**

**Specificity**      Endogenous

**Gene name**      S100B

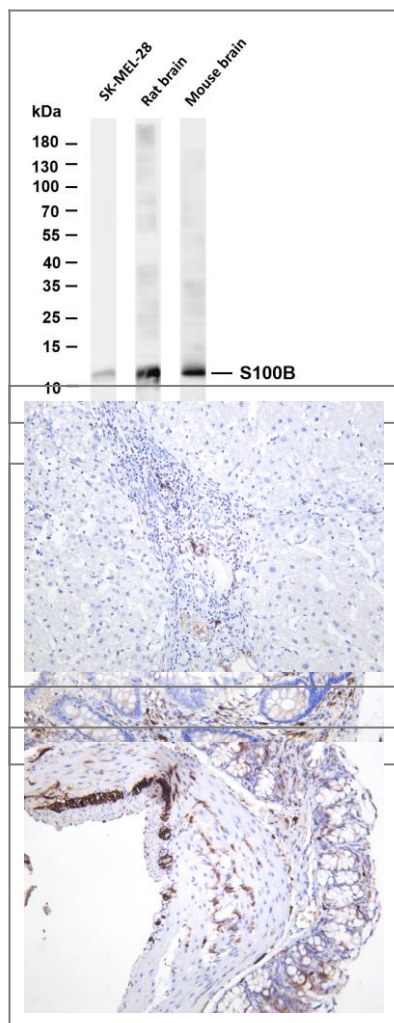
Protein Name	Organism	Gene ID	UniProt ID
	Human	<a href="#">6285</a> ;	<a href="#">P04271</a> ;
	Mouse		<a href="#">P50114</a> ;

**Cellular Localization**      Cytoplasm, Nucleus

**Tissue specificity** Although predominant among the water-soluble brain proteins, S100 is also found in a variety of other tissues.

**Function**      Function:Weakly binds calcium but binds zinc very tightly-distinct binding sites with different affinities exist for both ions on each monomer. Physiological concentrations of potassium ion antagonize the binding of both divalent cations, especially affecting highaffinity calcium-binding sites. Binds to and initiates the activation of STK38 by releasing autoinhibitory intramolecular interactions within the kinase.,miscellaneous:In addition to metal-ion binding, this protein is involved with the regulation of protein phosphorylation in brain tissue.,similarity:Belongs to the S-101 family.,similarity:Contains 2 EF-hand domains.,subunit:Dimer of either two alpha chains, or two beta chains, or one alpha and one beta chain. The S100B dimer binds two molecules of STK38 (By similarity). The S100B dimer interacts with two molecules of CAPZA1.,tissue specificity:Although predominant among the water-soluble brain proteins, S100 is also found in a variety of other tissues.,

## Validation Data



Various whole cell lysates were separated by 4-20% SDS-PAGE, and the membrane was blotted with anti-S100B (ANT0061R) antibody. The HRPconjugated Goat anti-Rabbit IgG(H + L) antibody was used to detect the antibody. Lane 1: SK-MEL-28 Lane 2: Rat brain Lane 3: Mouse brain Predicted band size: 11kDa Observed band size: 11kDa

Human colon was stained with anti-S100B (ANT0061R) rabbit antibody  
Human liver was stained with anti-S100B (ANT0061R) rabbit antibody

Mouse colon was stained with anti-S100B (ANT0061R) rabbit antibody

Rat colon was stained with anti-S100B (ANT0061R) rabbit antibody

For Research use only, not for diagnostics and clinical use  
Contact Antagene Inc Tel 1-866-964-2589 Email: [info@antageneinc.com](mailto:info@antageneinc.com)