

Perilipin-1 (ANT0058R) Rabbit mAb

CatalogNo: ANT8295 **Recombinant** 

Formulation: PBS,50%glycerol,0.05%Proclin 300,0.05%BSA
Quantity : 100 ug/vial

Host Species

- Rabbit
- Human,Mouse,Rat,

Reactivity

- WB,IHC,IF,IP,ELISA

Applications

MW

- 56kD (Calculated)
- 56kD (Observed)

Isotype

- IgG,Kappa

Recommended Dilution Ratios

IHC 1:400-1:1000

WB 1:2000-1:10000

IF 1:200-1:1000

ELISA 1:5000-1:20000

IP 1:50-1:200

Storage

Storage* -15°C to -25°C/1 year(Do not lower than -25°C)

Basic Information

Clonality Monoclonal

Clone Number ANT0058R

Target Information

Endogenous

Gene name PLIN1 PERI PLIN
Protein Name Perilipin-1 (Lipid droplet-associated protein)

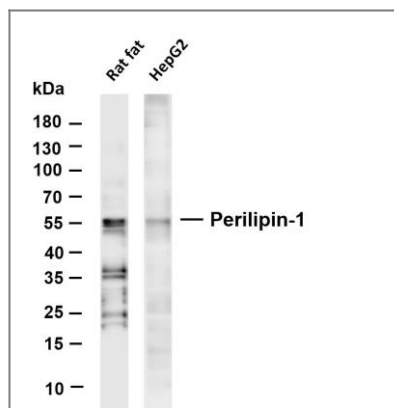
Organism	Gene ID	UniProt ID
Human	5346 ;	O60240 ;
Mouse	103968 ;	Q8CGN5 ;
Rat	25629 ;	P43884 ;

Cellular Localization Endoplasmic reticulum

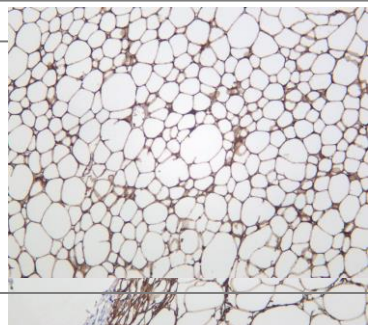
Tissue specificity Detected in adipocytes from white adipose tissue (at protein level) (PubMed:27832861). Detected in visceral adipose tissue and mammary gland (PubMed:9521880).

Function Modulator of adipocyte lipid metabolism. Coats lipid storage droplets to protect them from breakdown by hormone-sensitive lipase (HSL). Its absence may result in leanness. Plays a role in unilocular lipid droplet formation by activating CIDEC. Their interaction promotes lipid droplet enlargement and directional net neutral lipid transfer. May modulate lipolysis and triglyceride levels.

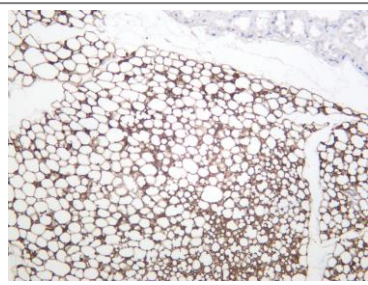
Validation Data



Various whole cell lysates were separated by 4-20% SDS-PAGE, and the membrane was blotted with anti-Perilipin-1 (ANT0058R) antibody. The HRPconjugated Goat anti-Rabbit IgG(H + L) antibody was used to detect the antibody. Lane 1: Rat fat Lane 2: HepG2
Predicted band size: 56kDa
Observed band size: 56kDa



Human adipose was stained with anti-Perilipin-1 (ANT0058R) rabbit antibody
Mouse adipose was stained with anti-Perilipin-1 (ANT0058R) rabbit antibody



Rat adipose was stained with anti-Perilipin-1 (ANT0058R) rabbit antibody

For Research use only, not for diagnostics and clinical use
Contact Antagene Inc Tel 1-866-964-2589 Email: info@antageneinc.com