



## Mouse Monoclonal Antibody **MYPT1** conjugated to Sepharose Beads

CatalogNo: **ANT8290-M**

Size 200ul

Storage Store at 4 °C for frequent use

### Description

This Antagene antibody is immobilized by the covalent reaction of hydrazinonicotinamide-modified antibody with formylbenzamide-modified beads. It is useful for immunoprecipitation.

### **MYPT1 (ANT0053R) Rabbit mAb**

Formulation: Each vial contains 1mg/ml Magnetic Bead in PBS, pH 7.2, 0.05mg ANaN3.

#### Host Species

- Rabbit

#### MW

- 140kD (Calculated)
- 140kD (Observed)

#### Reactivity

- Human,

#### Isotype

- IgG,Kappa

#### Applications

- WB,IHC,IF,IP,ELISA

## **Recommended Dilution Ratios**

### **IP**

## **Basic Information**

#### Clonality

Monoclonal

Clone Number      ANT0053R

Immunogen Information

Specificity      Endogenous

Gene name      PPP1R12A

Protein Name      Protein phosphatase 1 regulatory subunit 12A

Organism	Gene ID	UniProt ID
Human	<a href="#">4659</a> ;	<a href="#">O14974</a> ;
Mouse	<a href="#">17931</a> ;	<a href="#">Q9DBR7</a> ;
Rat	<a href="#">116670</a> ;	<a href="#">Q10728</a> ;

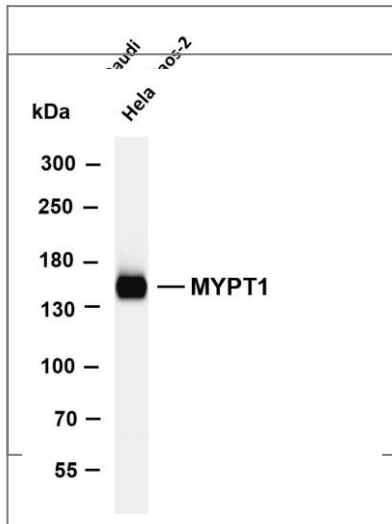
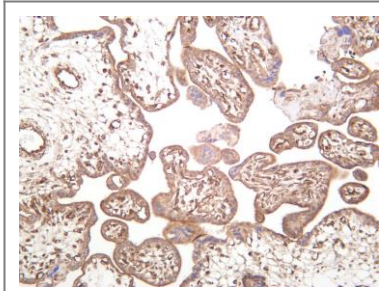
Cellular Localization      Cytoplasm

Tissue specificity      Expressed in striated muscles, specifically in type 2a fibers (at protein level).

Function      Function:Regulates myosin phosphatase activity.,ANTM:Phosphorylated by CIT (Rhoassociated kinase) (By similarity). Phosphorylated cooperatively by ROCK1 and CDC42BP on Thr-696. Phosphorylated on upon DNA damage, probably by ATM or ATR.,sequence Caution:Contaminating sequence. Potential poly-A sequence.,similarity:Contains 6 ANK repeats.,subcellular location:Along actomyosin filaments and stress fibers.,subunit:PP1 comprises a catalytic subunit, PPP1CA, PPP1CB or PPP1CC, and one or several targeting or regulatory subunits. PPP1R12A mediates binding to myosin. Interacts with ARHA and CIT (By similarity). Binds PPP1R12B, ROCK1 and IL16.,

## Validation Data

Human placenta was stained with anti-MYPT1 (ANT0053R) rabbit antibody



Various whole cell lysates were separated by 4-20% SDS-PAGE, and the membrane was blotted with anti-MYPT1 (ANT0053R) antibody. The HRPconjugated Goat anti-Rabbit IgG(H + L) antibody was used to detect the antibody. Lane 1: Daudi Lane 2: Saos-2 Predicted band size: 140kDa Observed band size: 140kDa

Various whole cell lysates were separated by 4-8% SDS-PAGE, and the membrane was blotted with anti-MYPT1 (ANT0053R) antibody. The HRPconjugated Goat anti-Rabbit IgG(H + L) antibody was used to detect the antibody. Lane 1: HeLa Predicted band size: 140kDa Observed band size:

140kDa

For Research use only, not for diagnostics and clinical use  
Contact Antagene Inc Tel 1-866-964-2589 Email: [info@antageneinc.com](mailto:info@antageneinc.com)