

## LYVE1 (ANT0049R) Rabbit mAb

CatalogNo: ANT8288 **Recombinant** 

Formulation: PBS,50%glycerol,0.05%Proclin 300,0.05%BSA  
Quantity : 100 ug/vial

### Host Species

- Rabbit
- Human,Mouse,Rat,

### Reactivity

- WB,IHC,IF,IP,ELISA

### Applications

### MW

- 35kD (Calculated)
- 35kD (Observed)

### Isotype

- IgG,Kappa

## Recommended Dilution Ratios

IHC 1:200-1:1000

WB 1:2000-1:10000

IF 1:200-1:1000

ELISA 1:5000-1:20000

IP 1:50-1:200

## Storage

**Storage\*** -15°C to -25°C/1 year(Do not lower than -25°C)

## Basic Information

**Clonality** Monoclonal

**Clone Number** ANT0049R

## Target Information

Endogenous

Gene name LYVE1 CRSBP1 HAR XLKD1 UNQ230/PRO263

Protein Name Lymphatic vessel endothelial hyaluronic acid receptor 1 (LYVE-1) (Cell surface retention sequence-binding protein 1) (CRSBP-1) (Extracellular link domain-containing protein 1) (Hyaluronic acid receptor)

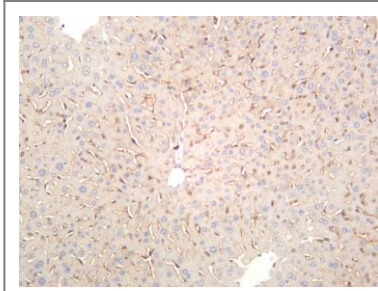
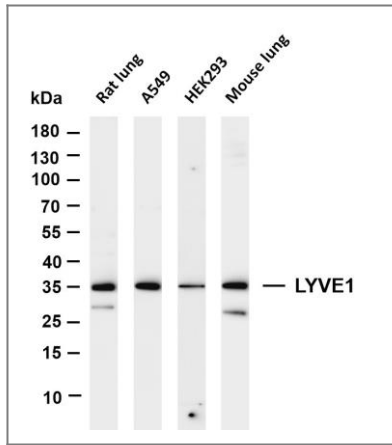
Organism	Gene ID	UniProt ID
Human	<a href="#">10894</a> ;	<a href="#">Q9Y5Y7</a> ;
Mouse		<a href="#">Q8BHC0</a> ;

Cellular Localization Membrane

Tissue specificity Mainly expressed in endothelial cells lining lymphatic vessels.

Function: Ligand-specific transporter trafficking between intracellular organelles (TGN) and the plasma membrane. Plays a role in autocrine regulation of cell growth mediated by growth regulators containing cell surface retention sequence binding (CRS). May act as an hyaluronan (HA) transporter, either mediating its uptake for catabolism within lymphatic endothelial cells themselves, or its transport into the lumen of afferent lymphatic vessels for subsequent re-uptake and degradation in lymph nodes.,ANTM:Oglycosylated.,similarity:Contains 1 Link domain.,subcellular location:Localized to the plasma membrane and in vesicles near extranuclear membranes which may represent trans-Golgi network (TGN) and endosomes/prelysosomal compartments. Undergoes ligand-dependent internalization and recycling at the cell surface.,subunit:Homodimer; disulfide-linked. Interacts with PDGFB and IGFBP3. Forms a transient ternary complex with PDGFB and PDGFRB in TGN.,tissue specificity:Mainly expressed in endothelial cells lining lymphatic vessels.,

## Validation Data



Various whole cell lysates were separated by 4-20% SDS-PAGE, and the membrane was blotted with anti-LYVE1 (ANT0049R) antibody. The HRPconjugated Goat anti-Rabbit IgG(H + L) antibody was used to detect the antibody. Lane 1: Rat lung Lane 2: A549 Lane 3: HEK293 Lane 4: Mouse lung  
Predicted band size: 35kDa Observed band size: 35kDa

Mouse liver was stained with anti-LYVE1 (ANT0049R) rabbit antibody

For Research use only, not for diagnostics and clinical use  
Contact Antagene Inc Tel 1-866-964-2589 Email: [info@antageneinc.com](mailto:info@antageneinc.com)