



Mouse Monoclonal Antibody **LYVE1** conjugated to Sepharose Beads

CatalogNo: **ANT8288-M**

Size 200ul

Storage Store at 4 °C for frequent use

Description

This Antagene antibody is immobilized by the covalent reaction of hydrazinonicotinamide-modified antibody with formylbenzamide-modified beads. It is useful for immunoprecipitation.

LYVE1 (ANT0049R) Rabbit mAb

Formulation: Each vial contains 1mg/ml Magnetic Bead in PBS, pH 7.2, 0.05mg ANaN3.

Host Species

- Rabbit
- Human, Mouse, Rat,

Reactivity

- WB, IHC, IF, IP, ELISA

Applications

MW

- 35kD (Calculated)
- IgG, Kappa
- 35kD (Observed)

Isotype

Recommended Dilution Ratios

IP

Basic Information

Clonality

Monoclonal

Clone Number ANT0049R

Immunogen Information

Specificity Endogenous

Gene name LYVE1 CRSBP1 HAR XLKD1 UNQ230/PRO263

Protein Name Lymphatic vessel endothelial hyaluronic acid receptor 1 (LYVE-1) (Cell surface retention sequence-binding protein 1) (CRSBP-1) (Extracellular link domain-containing protein 1) (Hyaluronic acid receptor)

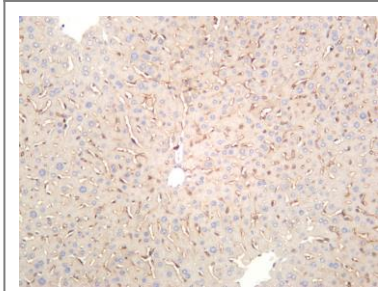
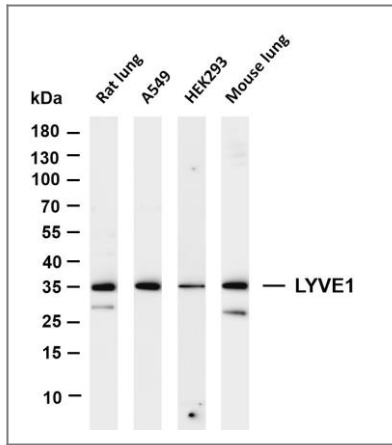
Organism	Gene ID	UniProt ID
Human	10894 ;	Q9Y5Y7 ;
Mouse		Q8BHC0 ;

Cellular Localization Membrane

Tissue specificity Mainly expressed in endothelial cells lining lymphatic vessels.

Function Function:Ligand-specific transporter trafficking between intracellular organelles (TGN) and the plasma membrane. Plays a role in autocrine regulation of cell growth mediated by growth regulators containing cell surface retention sequence binding (CRS). May act as an hyaluronan (HA) transporter, either mediating its uptake for catabolism within lymphatic endothelial cells themselves, or its transport into the lumen of afferent lymphatic vessels for subsequent re-uptake and degradation in lymph nodes.,ANTM:Oglycosylated.,similarity:Contains 1 Link domain.,subcellular location:Localized to the plasma membrane and in vesicles near extranuclear membranes which may represent trans-Golgi network (TGN) and endosomes/prelysosomeal compartments. Undergoes ligand-dependent internalization and recycling at the cell surface.,subunit:Homodimer; disulfide-linked. Interacts with PDGFB and IGFBP3. Forms a transient ternary complex with PDGFB and PDGFRB in TGN.,tissue specificity:Mainly expressed in endothelial cells lining lymphatic vessels.,

Validation Data



Various whole cell lysates were separated by 4-20% SDS-PAGE, and the membrane was blotted with anti-LYVE1 (ANT0049R) antibody. The HRPconjugated Goat anti-Rabbit IgG(H + L) antibody was used to detect the antibody. Lane 1: Rat lung Lane 2: A549 Lane 3: HEK293 Lane 4: Mouse lung
Predicted band size: 35kDa Observed band size: 35kDa

Mouse liver was stained with anti-LYVE1 (ANT0049R) rabbit antibody

For Research use only, not for diagnostics and clinical use
Contact Antagene Inc Tel 1-866-964-2589 Email: info@antageneinc.com