



Mouse Monoclonal Antibody **ACSL4** conjugated to Sepharose Beads

CatalogNo: **ANT8287-S**

Size 200ul

Storage Store at 4 °C for frequent use

Description

This Antagene antibody is immobilized via covalent binding of primary amino groups to N-hydroxysuccinimide (NHS)-activated sepharose beads. It is useful for immunoprecipitation assays.

ACSL4 (ANT0048R) Rabbit mAb

Formulation: 50% slurry in PBS pH 7.2 with 0.01mg NaN₃ preservative.

Host Species

- Rabbit
- Human, Mouse, Rat,

Reactivity

- WB, IHC, IF, IP, ELISA

Applications

MW

- 78kD (Calculated)
 - IgG, Kappa
- 78kD (Observed)

Isotype

Recommended Dilution Ratios

IP

Basic Information

Clonality

Monoclonal

Clone Number ANT0048R

Immunogen Information

Specificity Endogenous

Gene name ACSL4 ACS4 FACL4 LACS4

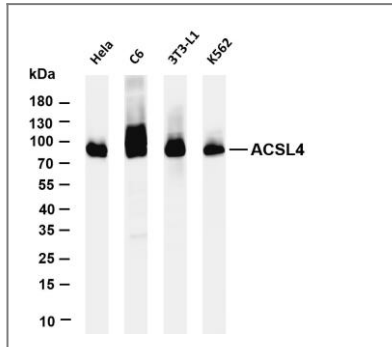
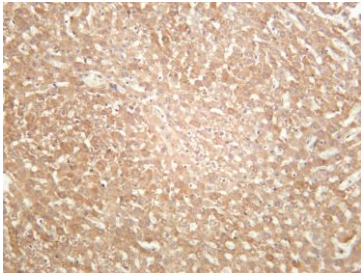
Protein Name ACSL4

Organism	Gene ID	UniProt ID
Human	2182 ;	O60488 ;
Mouse	50790 ;	Q9QUJ7 ;
Rat	113976 ;	O35547 ;

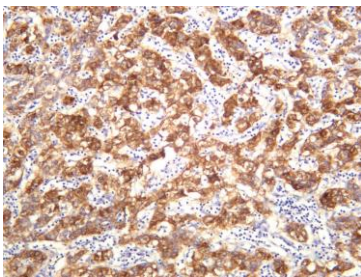
Cellular
Localization Membrane

Validation Data

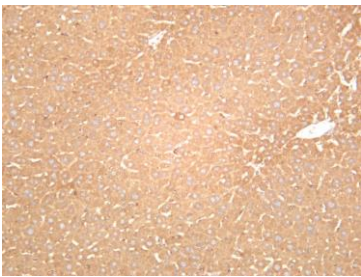
Rat liver was stained with anti-ACSL4 (ANT0048R) rabbit antibody



Various whole cell lysates were separated by 4-20% SDS-PAGE, and the membrane was blotted with anti-ACSL4 (ANT0048R) antibody. The HRPconjugated Goat anti-Rabbit IgG(H + L) antibody was used to detect the antibody. Lane 1: HeLa Lane 2: C6 Lane 3: 3T3-L1 Lane 4: K562 Predicted band size: 78kDa Observed band size: 78kDa



Human hepatocellular carcinoma was stained with anti-ACSL4 (ANT0048R) rabbit antibody



Mouse liver was stained with anti-ACSL4 (ANT0048R) rabbit antibody

For Research use only, not for diagnostics and clinical use
Contact Antagene Inc Tel 1-866-964-2589 Email: info@antageneinc.com