



PRAS40 (ANT0047R) Rabbit mAb

CatalogNo: ANT8286 **Recombinant** 

Formulation: PBS,50%glycerol,0.05%Proclin 300,0.05%BSA
Quantity : 100 ug/vial

Host Species

- Rabbit
- Human,Mouse,Rat,

Reactivity

- WB,IF,IP,ELISA

Applications

MW

- 27kD (Calculated)
- 40kD (Observed)

Isotype

- IgG,Kappa

Recommended Dilution Ratios

WB 1:2000-1:10000

IF 1:200-1:1000

ELISA 1:5000-1:20000

IP 1:50-1:200

Storage

Storage* -15°C to -25°C/1 year(Do not lower than -25°C)

Basic Information

Clonality Monoclonal

Clone Number ANT0047R

Immunogen Information

Specificity Endogenous

Target Information

Gene name AKT1S1
Protein Name Proline-rich AKT1 substrate 1

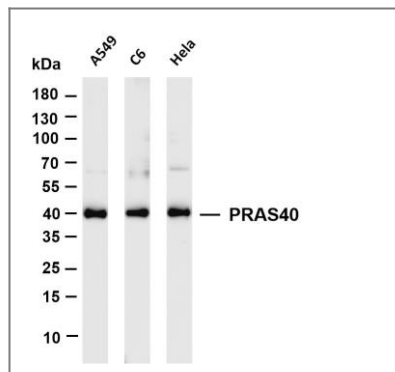
Organism	Gene ID	UniProt ID
Human	84335;	Q96B36;
Mouse	67605;	Q9D1F4;

Cellular Localization Cytoplasm

Tissue specificity Widely expressed with highest levels of expression in liver and heart. Expressed at higher levels in cancer cell lines (e.g. A-549 and HeLa) than in normal cell lines (e.g. HEK293).

Function Function: May play an important role in phosphatidylinositol 3-kinase (PI3K)-AKT1 survival signaling. Substrate for AKT1 phosphorylation, but can also be activated by AKT1 independent mechanisms. Its role in survival signaling pathways may be modulated by oxidative stress. May also play a role in nerve growth factor-mediated neuroprotection., subcellular location: Found in the cytosolic fraction of the brain., subunit: The phosphorylated form interacts with 14-3-3., tissue specificity: Widely expressed with highest levels of expression in liver and heart. Expressed at higher levels in cancer cell lines (e.g. A549 and HeLa) than in normal cell lines (e.g. HEK293).,

Validation Data



Various whole cell lysates were separated by 4-20% SDS-PAGE, and the membrane was blotted with anti-PRAS40 (ANT0047R) antibody. The HRP conjugated Goat anti-Rabbit IgG(H + L) antibody was used to detect the antibody. Lane 1: A549 Lane 2: C6 Lane 3: HeLa Predicted band size: 27kDa Observed band size: 40kDa

For Research use only, not for diagnostics and clinical use
Contact Antagene Inc Tel 1-866-964-2589 Email: info@antageneinc.com