



Mouse Monoclonal Antibody **PRAS40** conjugated to Sepharose Beads

CatalogNo: **ANT8286-S**

Size 200ul

Storage Store at 4 °C for frequent use

### Description

This Antagene antibody is immobilized via covalent binding of primary amino groups to N-hydroxysuccinimide (NHS)-activated sepharose beads. It is useful for immunoprecipitation assays.

**PRAS40 (ANT0047R) Rabbit mAb**

Formulation: 50% slurry in PBS pH 7.2 with 0.01mg NaN3a3 preservative.

### Host Species

- Rabbit
- Human,Mouse,Rat,

### Reactivity

- WB,IF,IP,ELISA

### Applications

### MW

- 27kD (Calculated)
- 40kD (Observed)

### Isotype

- IgG,Kappa

## Recommended Dilution Ratios

IP

### Basic Information

Clonality	Monoclonal
-----------	------------

Clone Number	ANT0047R
--------------	----------

### Immunogen Information

Specificity	Endogenous
-------------	------------

## Target Information

**Gene name** AKT1S1  
**Protein Name** Proline-rich AKT1 substrate 1

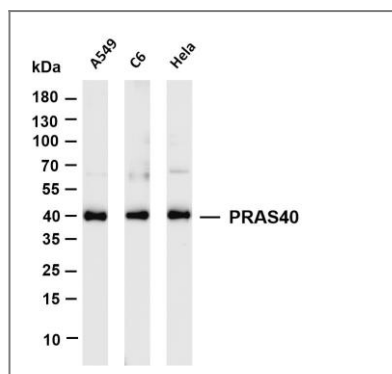
Organism	Gene ID	UniProt ID
Human	<a href="#">84335;</a>	<a href="#">Q96B36;</a>
Mouse	<a href="#">67605;</a>	<a href="#">Q9D1F4;</a>

**Cellular Localization** Cytoplasm

**Tissue specificity** Widely expressed with highest levels of expression in liver and heart. Expressed at higher levels in cancer cell lines (e.g. A-549 and HeLa) than in normal cell lines (e.g. HEK293).

**Function** Function:May play an important role in phosphatidylinositol 3-kinase (PI3K)-AKT1 survival signaling. Substrate for AKT1 phosphorylation, but can also be activated by AKT1independent mechanisms. Its role in survival signaling pathways may be modulated by oxidative stress. May also play a role in nerve growth factor-mediated neuroprotection.,subcellular location:Found in the cytosolic fraction of the brain.,subunit:The phosphorylated form interacts with 14-3-3.,tissue specificity:Widely expressed with highest levels of expression in liver and heart. Expressed at higher levels in cancer cell lines (e.g. A549 and HeLa) than in normal cell lines (e.g. HEK293).,

## Validation Data



Various whole cell lysates were separated by 4-20% SDS-PAGE, and the membrane was blotted with anti-PRAS40 (ANT0047R) antibody. The HRPconjugated Goat anti-Rabbit IgG(H + L) antibody was used to detect the antibody. Lane 1: A549 Lane 2: C6 Lane 3: HeLa Predicted band size: 27kDa Observed band size: 40kDa

For Research use only, not for diagnostics and clinical use  
Contact Antagene Inc Tel 1-866-964-2589 Email: [info@antageneinc.com](mailto:info@antageneinc.com)