



Mouse Monoclonal Antibody **PRAS40** conjugated to Sepharose Beads

CatalogNo: **ANT8286-M**

Size 200ul

Storage Store at 4 °C for frequent use

### Description

This Antagene antibody is immobilized by the covalent reaction of hydrazinonicotinamide-modified antibody with formylbenzamide-modified beads. It is useful for immunoprecipitation.

**PRAS40 (ANT0047R) Rabbit mAb**

Formulation: Each vial contains 1mg/ml Magnetic Bead in PBS, pH 7.2, 0.05mg ANaN3.

### Host Species

- Rabbit
- Human, Mouse, Rat,

### Reactivity

- WB, IF, IP, ELISA

### Applications

### MW

- 27kD (Calculated)
- 40kD (Observed)

### Isotype

- IgG, Kappa

## Recommended Dilution Ratios

IP

### Basic Information

**Clonality** Monoclonal

**Clone Number** ANT0047R

### Immunogen Information

**Specificity** Endogenous

# Target Information

Gene name AKT1S1  
Protein Name Proline-rich AKT1 substrate 1

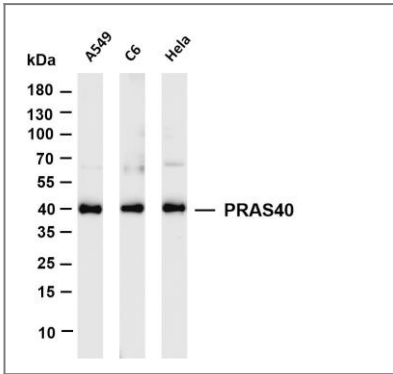
Organism	Gene ID	UniProt ID
Human	<a href="#">84335;</a>	<a href="#">Q96B36;</a>
Mouse	<a href="#">67605;</a>	<a href="#">Q9D1F4;</a>

Cellular Localization Cytoplasm

Tissue specificity Widely expressed with highest levels of expression in liver and heart. Expressed at higher levels in cancer cell lines (e.g. A-549 and HeLa) than in normal cell lines (e.g. HEK293).

Function Function:May play an important role in phosphatidylinositol 3-kinase (PI3K)-AKT1 survival signaling. Substrate for AKT1 phosphorylation, but can also be activated by AKT1independent mechanisms. Its role in survival signaling pathways may be modulated by oxidative stress. May also play a role in nerve growth factor-mediated neuroprotection.,subcellular location:Found in the cytosolic fraction of the brain.,subunit:The phosphorylated form interacts with 14-3-3.,tissue specificity:Widely expressed with highest levels of expression in liver and heart. Expressed at higher levels in cancer cell lines (e.g. A549 and HeLa) than in normal cell lines (e.g. HEK293).,

# Validation Data



Various whole cell lysates were separated by 4-20% SDS-PAGE, and the membrane was blotted with anti-PRAS40 (ANT0047R) antibody. The HRPconjugated Goat anti-Rabbit IgG(H + L) antibody was used to detect the antibody. Lane 1: A549 Lane 2: C6 Lane 3: HeLa Predicted band size: 27kDa Observed band size: 40kDa

For Research use only, not for diagnostics and clinical use  
Contact Antagene Inc Tel 1-866-964-2589 Email: [info@antageneinc.com](mailto:info@antageneinc.com)