

Ferritin Heavy Chain (ANT0046R) Rabbit mAb

CatalogNo: ANT8285 **Recombinant** 

Formulation: PBS,50%glycerol,0.05%Proclin 300,0.05%BSA
Quantity : 100 ug/vial

Host Species

- Rabbit
- Mouse,Rat,
- WB,IHC,IF,IP,ELISA

Reactivity

Applications

MW

- 21kD (Calculated)
 - IgG,Kappa
- 21kD (Observed)

Isotype

Recommended Dilution Ratios

IHC 1:200-1:1000

WB 1:2000-1:10000

IF 1:200-1:1000

ELISA 1:5000-1:20000

IP 1:50-1:200

Storage

Storage* -15°C to -25°C/1 year(Do not lower than -25°C)

Basic Information

Clonality Monoclonal

Clone Number ANT0046R

Target Information

Endogenous

Gene name FTH1
Protein Name Ferritin heavy chain

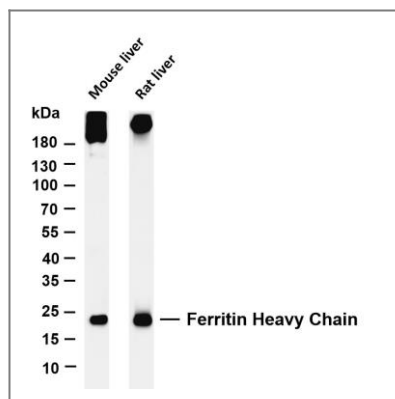
Organism	Gene ID	UniProt ID
Human	2495;	P02794;
Mouse	14319;	P09528;
Rat	25319;	P19132;

Cellular Localization Cytoplasm

Tissue specificity Expressed in the liver.

Function Catalytic activity:4 Fe(2+) + 4 H(+) + O(2) = 4 Fe(3+) + 2 H(2)O.,Function:Stores iron in a soluble, non-toxic, readily available form. Important for iron homeostasis.,Function:Stores iron in a soluble, non-toxic, readily available form. Important for iron homeostasis. Has ferroxidase activity. Iron is taken up in the ferrous form and deposited as ferric hydroxides after oxidation. Also plays a role in delivery of iron to cells. Mediates iron uptake in capsule cells of the developing kidney.,miscellaneous:In human liver the heavy chain is the major chain.,online information:Ferritin entry,similarity:Belongs to the ferritin family.,similarity:Contains 1 ferritin-like diiron domain.,subunit:Oligomer of 24 subunits. There are two types of subunits: L (light) chain and H (heavy) chain. The major chain can be light or heavy, depending on the species and tissue type. The functional molecule forms a roughly spherical shell with a diameter of 12 nm and contains a central cavity into which the insoluble mineral iron core is deposited.,

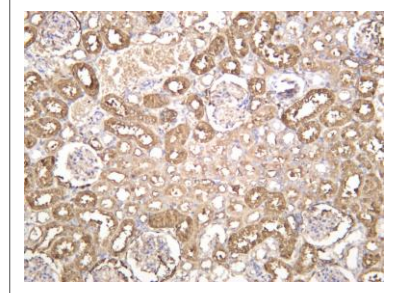
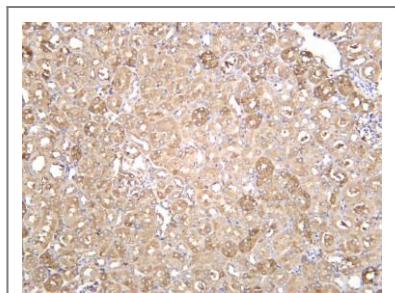
Validation Data



Various whole cell lysates were separated by 4-20% SDS-PAGE, and the membrane was blotted with anti-Ferritin Heavy Chain (ANT0046R) antibody. The HRP-conjugated Goat anti-Rabbit IgG(H + L) antibody was used to detect the antibody. Lane 1: Mouse liver Lane 2: Rat liver Predicted band size:

21kDa Observed band size: 21kDa

Mouse kidney was stained with anti-Ferritin Heavy Chain (ANT0046R) rabbit antibody



Rat kidney was stained with anti-Ferritin Heavy Chain (PT0446R) rabbit antibody

For Research use only, not for diagnostics and clinical use
Contact Antagene Inc Tel 1-866-964-2589 Email: info@antageneinc.com