



Mouse Monoclonal Antibody **Ferritin Heavy Chain** conjugated to Sepharose Beads

CatalogNo: **ANT8285-S**

Size 200ul

Storage Store at 4 °C for frequent use

Description

This Antagene antibody is immobilized via covalent binding of primary amino groups to N-hydroxysuccinimide (NHS)-activated sepharose beads. It is useful for immunoprecipitation assays.

Ferritin Heavy Chain (ANT0046R) Rabbit mAb

Formulation: 50% slurry in PBS pH 7.2 with 0.01mg NaN₃ preservative.

Host Species

- Rabbit
- Mouse,Rat,
- WB,IHC,IF,IP,ELISA

Reactivity

Applications

MW

- 21kD (Calculated)
 - IgG,Kappa
- 21kD (Observed)

Isotype

Recommended Dilution Ratios

IP

Basic Information

Clonality

Monoclonal

Clone Number ANT0046R

Immunogen Information

Specificity Endogenous

Gene name FTH1

Protein Name Ferritin heavy chain

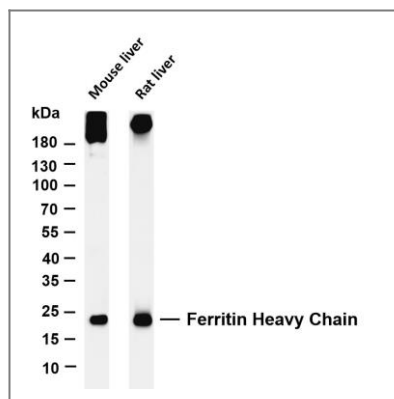
Organism	Gene ID	UniProt ID
Human	2495 ;	P02794 ;
Mouse	14319 ;	P09528 ;
Rat	25319 ;	P19132 ;

**Cellular
Localization** Cytoplasm

Tissue specificity Expressed in the liver.

Function Catalytic activity:4 Fe(2+) + 4 H(+) + O(2) = 4 Fe(3+) + 2 H(2)O.,Function:Stores iron in a soluble, non-toxic, readily available form. Important for iron homeostasis.,Function:Stores iron in a soluble, non-toxic, readily available form. Important for iron homeostasis. Has ferroxidase activity. Iron is taken up in the ferrous form and deposited as ferric hydroxides after oxidation. Also plays a role in delivery of iron to cells. Mediates iron uptake in capsule cells of the developing kidney.,miscellaneous:In human liver the heavy chain is the major chain.,online information:Ferritin entry,similarity:Belongs to the ferritin family.,similarity:Contains 1 ferritin-like diiron domain.,subunit:Oligomer of 24 subunits. There are two types of subunits: L (light) chain and H (heavy) chain. The major chain can be light or heavy, depending on the species and tissue type. The functional molecule forms a roughly spherical shell with a diameter of 12 nm and contains a central cavity into which the insoluble mineral iron core is deposited.,

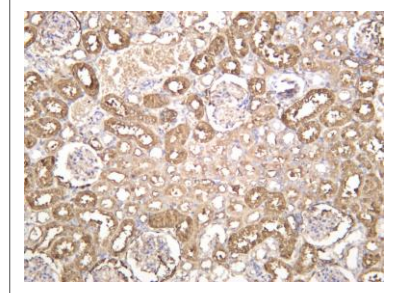
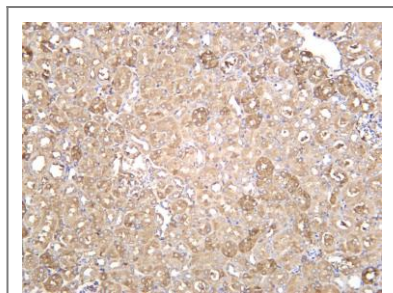
Validation Data



Various whole cell lysates were separated by 4-20% SDS-PAGE, and the membrane was blotted with anti-Ferritin Heavy Chain (ANT0046R) antibody. The HRP-conjugated Goat anti-Rabbit IgG(H + L) antibody was used to detect the antibody. Lane 1: Mouse liver Lane 2: Rat liver Predicted band size:

21kDa Observed band size: 21kDa

Mouse kidney was stained with anti-Ferritin Heavy Chain (ANT0046R) rabbit antibody



Rat kidney was stained with anti-Ferritin Heavy Chain (PT0446R) rabbit antibody

For Research use only, not for diagnostics and clinical use
Contact Antagene Inc Tel 1-866-964-2589 Email: info@antageneinc.com