



Mouse Monoclonal Antibody **Keap1** conjugated to Sepharose Beads

CatalogNo: **ANT8283-M**

Size 200ul

Storage Store at 4 °C for frequent use

Description

This Antagene antibody is immobilized by the covalent reaction of hydrazinonicotinamide-modified antibody with formylbenzamide-modified beads. It is useful for immunoprecipitation.

Keap1 (ANT0044R) Rabbit mAb

Formulation: Each vial contains 1mg/ml Magnetic Bead in PBS, pH 7.2, 0.05mg ANaN3.

Host Species

- Rabbit
- Human, Mouse, Rat,

Reactivity

- WB, IHC, IF, IP, ELISA

Applications

MW

- 70kD (Calculated)
- IgG, Kappa
- 60-70kD (Observed)

Isotype

Recommended Dilution Ratios

IP

Basic Information

Clonality Monoclonal

Clone Number ANT0044R

Immunogen Information

Specificity Endogenous

Gene name KEAP1 INRF2 KIAA0132 KLHL19

Protein Name Kelch-like ECH-associated protein 1 (Cytosolic inhibitor of Nrf2) (INrf2) (Kelch-like protein 19)

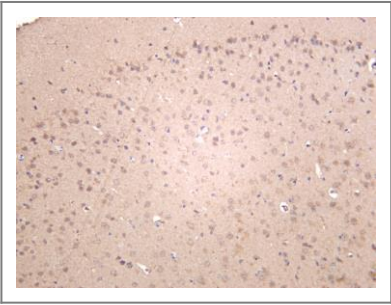
Organism	Gene ID	UniProt ID
Human	9817;	Q14145;
Mouse	50868;	Q9Z2X8;
Rat	117519;	P57790;

Cellular Localization Cytoplasm, Nucleus

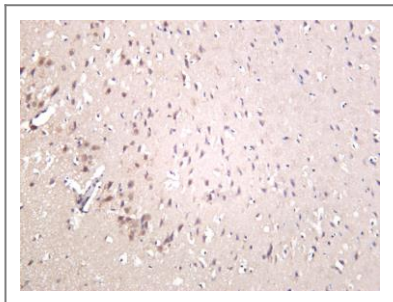
Tissue specificity Broadly expressed, with highest levels in skeletal muscle.

Function Disease:Defects in KEAP1 may be a cause of breast cancer.,Disease:Defects in KEAP1 may be involved in non small cell lung carcinomas (NSCLC) and lung adenocarcinoma.,Domain:The Kelch repeats mediate interaction with NF2L2/NRF2, BPTF and PGAM5.,enzyme regulation:Ubiquitination and subsequent degradation of PGAM5 is inhibited by oxidative stress and sulforaphane.,Function:Retains NFE2L2/NRF2 in the cytosol. Functions as substrate adapter protein for the E3 ubiquitin ligase complex formed by CUL3 and RBX1. Targets NFE2L2/NRF2 for ubiquitination and degradation by the proteasome, thus resulting in the suppression of its transcriptional activity and the repression of antioxidant response element-mediated detoxifying enzyme gene expression. May also retain BPTF in the cytosol. Targets PGAM5 for ubiquitination and degradation by the proteasome.,ANTM:Ubiquitinated and subject to proteasomal degradation.,similarity:Contains 1 BACK (BTB/Kelch associated) domain.,similarity:Contains 1 BTB (POZ) domain.,similarity:Contains 6 Kelch repeats.,subcellular location:Shuttles between cytoplasm and nucleus.,subunit:Homodimer. Interacts with the N-terminal regulatory domain of NF2L2/NRF2. Interacts with BPTF and PTMA. Interacts with CUL3. Part of a complex that contains KEAP1, CUL3 and RBX1. Interacts with PGAM5.,tissue specificity:Broadly expressed, with highest levels in skeletal muscle.,

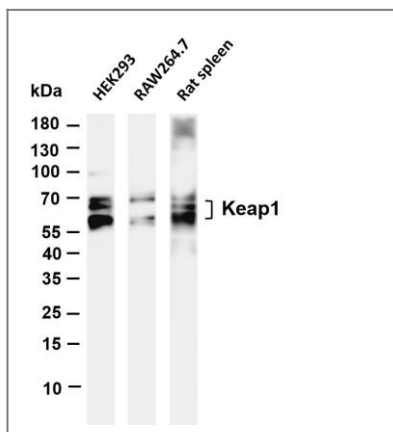
Validation Data



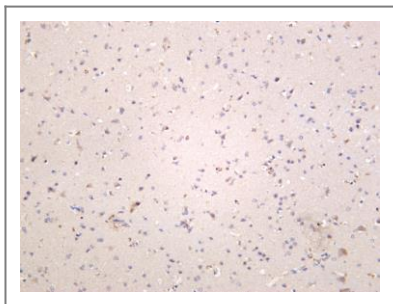
Mouse brain was stained with anti-Keap1 (ANT0044R) rabbit antibody



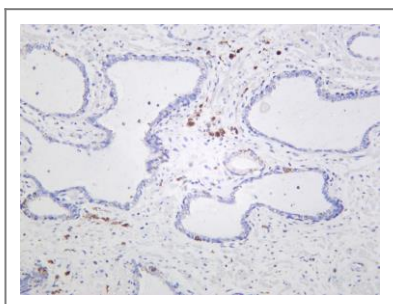
Rat brain was stained with anti-Keap1 (ANT0044R) rabbit antibody



Various whole cell lysates were separated by 4-20% SDS-PAGE, and the membrane was blotted with anti-Keap1 (ANT0044R) antibody. The HRPconjugated Goat anti-Rabbit IgG(H + L) antibody was used to detect the antibody. Lane 1: HEK293 Lane 2: RAW264.7 Lane 3: Rat spleen Predicted band size: 70kDa Observed band size: 60-70kDa



Human brain was stained with anti-Keap1 (ANT0044R) rabbit antibody



Human prostate was stained with anti-Keap1 (ANT0044R) rabbit antibody

For Research use only, not for diagnostics and clinical use
Contact Antagene Inc Tel 1-866-964-2589 Email: info@antageneinc.com