



Mouse Monoclonal Antibody **Cardiac Troponin T** conjugated to Sepharose Beads

CatalogNo: **ANT8282-S**

Size 200ul

Storage Store at 4 °C for frequent use

Description

This Antagene antibody is immobilized via covalent binding of primary amino groups to N-hydroxysuccinimide (NHS)-activated sepharose beads. It is useful for immunoprecipitation assays.

Cardiac Troponin T (ANT0043R) Rabbit mAb

Formulation: 50% slurry in PBS pH 7.2 with 0.01mg NaN₃ preservative.

Host Species

- Rabbit
- Human, Mouse, Rat,

Reactivity

- WB, IHC, IF, IP, ELISA

Applications

MW

- 36kD (Calculated)
 - IgG, Kappa
- 36kD (Observed)

Isotype

Recommended Dilution Ratios

Basic Information

Clonality	Monoclonal
Clone Number	ANT0043R

Immunogen Information

Specificity	Endogenous
-------------	------------

Gene name	TNNT2
-----------	-------

Protein Name	Troponin T cardiac muscle
--------------	---------------------------

Organism	Gene ID	UniProt ID
Human	7139;	P45379;
Mouse	21956;	P50752;
Rat	24837;	P50753;

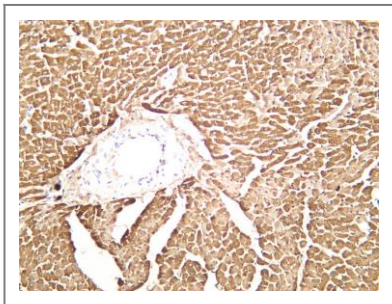
Cellular Localization	Cytoplasm
-----------------------	-----------

Tissue specificity Heart. The fetal heart shows a greater expression in the atrium than in the ventricle, while the adult heart shows a greater expression in the ventricle than in the atrium. Isoform 6 predominates in normal adult heart. Isoforms 1, 7 and 8 are expressed in fetal heart. Isoform 7 is also expressed in failing adult heart.

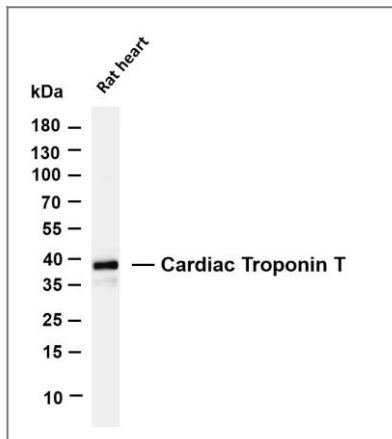
Function

Alternative products:Additional isoforms seem to exist. Experimental confirmation may be lacking for some isoforms,Disease:Defects in TNNT2 are the cause of cardiomyopathy dilated type 1D (CMD1D) [MIM:601494]. Dilated cardiomyopathy is a disorder characterized by ventricular dilation and impaired systolic function, resulting in congestive heart failure and arrhythmia. Patients are at risk of premature death.,Disease:Defects in TNNT2 are the cause of cardiomyopathy familial hypertrophic type 2 (CMH2) [MIM:115195]. Familial hypertrophic cardiomyopathy is a hereditary heart disorder characterized by ventricular hypertrophy, which is usually asymmetric and often involves the interventricular septum. The symptoms include dyspnea, syncope, collapse, palpitations, and chest pain. They can be readily provoked by exercise. The disorder has inter- and intrafamilial variability ranging from benign to malignant forms with high risk of cardiac failure and sudden cardiac death.,Disease:Defects in TNNT2 are the cause of cardiomyopathy familial restrictive type 3 (RCM3) [MIM:612422]. Restrictive cardiomyopathy is a heart disorder characterized by impaired filling of the ventricles with reduced diastolic volume, in the presence of normal or near normal wall thickness and systolic function.,Function:Troponin T is the tropomyosinbinding subunit of troponin, the thin filament regulatory complex which confers calciumsensitivity to striated muscle actomyosin ATPase activity.,similarity:Belongs to the troponin T family.,tissue specificity:Heart. The fetal heart shows a greater expression in the atrium than in the ventricle, while the adult heart shows a greater expression in the ventricle than in the atrium. Isoform 6 predominates in normal adult heart. Isoforms 1, 7 and 8 are expressed in fetal heart. Isoform 7 is also expressed in failing adult heart.,

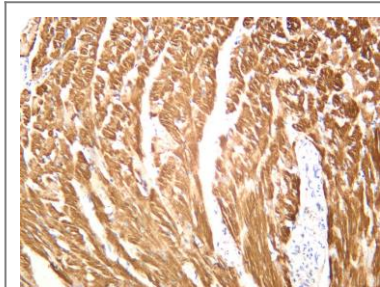
Validation Data



Rat cardiac muscle was stained with anti-Cardiac Troponin T (ANT0043R) rabbit antibody



Various whole cell lysates were separated by 4-20% SDS-PAGE, and the membrane was blotted with anti-Cardiac Troponin T (ANT0043R) antibody. The HRP-conjugated Goat anti-Rabbit IgG(H + L) antibody was used to detect the antibody. Lane 1: Rat heart
Predicted band size: 36kDa Observed band size: 36kDa



Mouse cardiac muscle was stained with anti-Cardiac Troponin T (ANT0043R) rabbit antibody

For Research use only, not for diagnostics and clinical use
Contact Antagene Inc Tel 1-866-964-2589 Email: info@antageneinc.com