



## Osteopontin (ANT0042R) Rabbit mAb

CatalogNo: ANT8281 **Recombinant** 

Formulation: PBS,50%glycerol,0.05%Proclin 300,0.05%BSA  
Quantity : 100 ug/vial

### Host Species

- Rabbit
- Human,Mouse,Rat,

### Reactivity

- WB,IHC,IF,IP,ELISA

### Applications

### MW

- 35kD (Calculated)
- 55,65kD (Observed)

### Isotype

- IgG,Kappa

## Recommended Dilution Ratios

IHC 1:200-1:1000

WB 1:2000-1:10000

IF 1:200-1:1000

ELISA 1:5000-1:20000

IP 1:50-1:200

## Storage

**Storage\*** -15°C to -25°C/1 year(Do not lower than -25°C)

## Basic Information

**Clonality** Monoclonal

**Clone Number** ANT0042R

## Target Information

# Immunogen Information Specificity

Endogenous

Gene name SPP1  
Protein Name Osteopontin

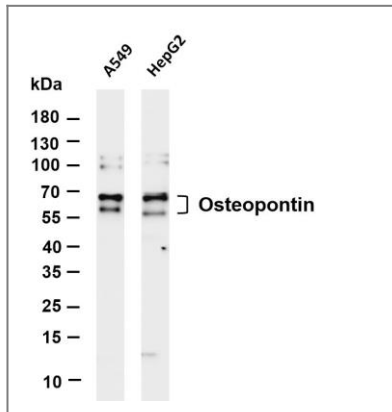
Organism	Gene ID	UniProt ID
Human	<a href="#">6696</a> ;	<a href="#">P10451</a> ;
Mouse	<a href="#">20750</a> ;	<a href="#">P10923</a> ;
Rat	<a href="#">25353</a> ;	<a href="#">P08721</a> ;

Cellular Secreted  
Localization

Tissue specificity Bone. Found in plasma.

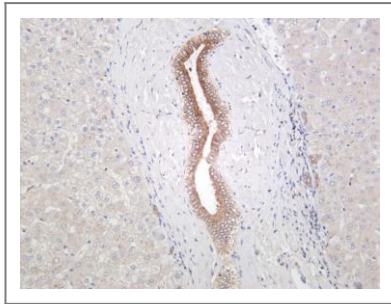
Function Disease:This protein plays a principal role in urinary stone formation as the stone matrix.,Function:Acts as a cytokine involved in enhancing production of interferon-gamma and interleukin-12 and reducing production of interleukin-10 and is essential in the pathway that leads to type I immunity.,Function:Binds tightly to hydroxyapatite. Appears to form an integral part of the mineralized matrix. Probably important to cell-matrix interaction.,online information:Osteopontin entry,ANTM:Extensively phosphorylated on clustered serine residues.,PTM:N- and O-glycosylated.,similarity:Belongs to the osteopontin family.,subunit:Ligand for integrin alpha-V/beta-3.,

## Validation Data



Various whole cell lysates were separated by 4-20% SDS-PAGE, and the membrane was blotted with anti-Osteopontin (ANT0042R) antibody. The HRPconjugated Goat anti-Rabbit IgG(H + L) antibody was used to detect the antibody. Lane 1: A549 Lane 2: HepG2  
Predicted band size: 35kDa Observed band size: 60kDa

Human liver was stained with anti-Osteopontin (ANT0042R) rabbit antibody



For Research use only, not for diagnostics and clinical use  
Contact Antagene Inc Tel 1-866-964-2589 Email: [info@antageneinc.com](mailto:info@antageneinc.com)