



Mouse Monoclonal Antibody **Osteopontin** conjugated to Sepharose Beads

CatalogNo: **ANT8281-S**

Size 200ul

Storage Store at 4 °C for frequent use

Description

This Antagene antibody is immobilized via covalent binding of primary amino groups to N-hydroxysuccinimide (NHS)-activated sepharose beads. It is useful for immunoprecipitation assays.

Osteopontin (ANT0042R) Rabbit mAb

Formulation: 50% slurry in PBS pH 7.2 with 0.01mg NaN₃ preservative.

Host Species

- Rabbit
- Human, Mouse, Rat,

Reactivity

- WB, IHC, IF, IP, ELISA

Applications

MW

- 35kD (Calculated)
 - IgG, Kappa
- 55,65kD (Observed)

Isotype

Recommended Dilution Ratios

Basic Information

Clonality	Monoclonal
Clone Number	ANT0042R

Immunogen Information

Specificity	Endogenous
-------------	------------

Gene name	SPP1
-----------	------

Protein Name	Osteopontin
--------------	-------------

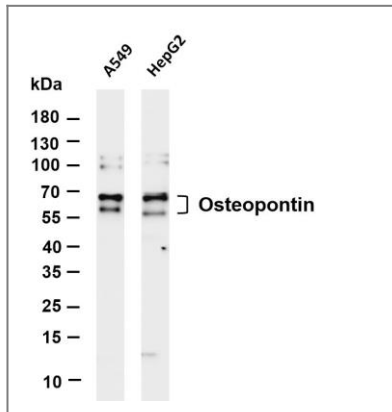
Organism	Gene ID	UniProt ID
Human	6696 ;	P10451 ;
Mouse	20750 ;	P10923 ;
Rat	25353 ;	P08721 ;

Cellular Localization	Secreted
-----------------------	----------

Tissue specificity Bone. Found in plasma.

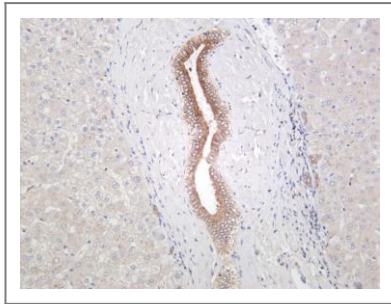
Function Disease:This protein plays a principal role in urinary stone formation as the stone matrix.,Function:Acts as a cytokine involved in enhancing production of interferon-gamma and interleukin-12 and reducing production of interleukin-10 and is essential in the pathway that leads to type I immunity.,Function:Binds tightly to hydroxyapatite. Appears to form an integral part of the mineralized matrix. Probably important to cell-matrix interaction.,online information:Osteopontin entry,ANTM:Extensively phosphorylated on clustered serine residues.,PTM:N- and O-glycosylated.,similarity:Belongs to the osteopontin family.,subunit:Ligand for integrin alpha-V/beta-3.,

Validation Data



Various whole cell lysates were separated by 4-20% SDS-PAGE, and the membrane was blotted with anti-Osteopontin (ANT0042R) antibody. The HRPconjugated Goat anti-Rabbit IgG(H + L) antibody was used to detect the antibody. Lane 1: A549 Lane 2: HepG2
Predicted band size: 35kDa Observed band size: 60kDa

Human liver was stained with anti-Osteopontin (ANT0042R) rabbit antibody



For Research use only, not for diagnostics and clinical use
Contact Antagene Inc Tel 1-866-964-2589 Email: info@antageneinc.com