



## Mouse Monoclonal Antibody **Osteopontin** conjugated to Sepharose Beads

CatalogNo: **ANT8281-M**

Size 200ul

Storage Store at 4 °C for frequent use

### Description

This Antagene antibody is immobilized by the covalent reaction of hydrazinonicotinamide-modified antibody with formylbenzamide-modified beads. It is useful for immunoprecipitation.

### **Osteopontin (ANT0042R) Rabbit mAb**

Formulation: Each vial contains 1mg/ml Magnetic Bead in PBS, pH 7.2, 0.05mg ANaN3.

#### Host Species

- Rabbit
- Human, Mouse, Rat,

#### Reactivity

- WB, IHC, IF, IP, ELISA

#### Applications

#### MW

- 35kD (Calculated)
  - IgG, Kappa
- 55,65kD (Observed)

#### Isotype

## **Recommended Dilution Ratios**

Basic Information

Clonality	Monoclonal
Clone Number	ANT0042R

Immunogen Information

Specificity Endogenous

Gene name SPP1  
Protein Name Osteopontin

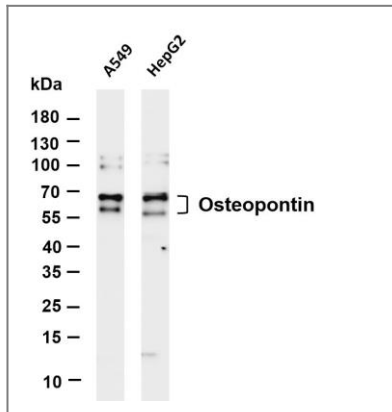
Organism	Gene ID	UniProt ID
Human	<a href="#">6696</a> ;	<a href="#">P10451</a> ;
Mouse	<a href="#">20750</a> ;	<a href="#">P10923</a> ;
Rat	<a href="#">25353</a> ;	<a href="#">P08721</a> ;

Cellular Localization Secreted

Tissue specificity Bone. Found in plasma.

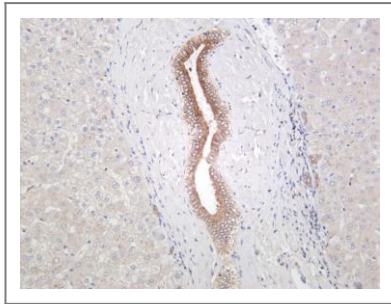
Function Disease:This protein plays a principal role in urinary stone formation as the stone matrix.,Function:Acts as a cytokine involved in enhancing production of interferon-gamma and interleukin-12 and reducing production of interleukin-10 and is essential in the pathway that leads to type I immunity.,Function:Binds tightly to hydroxyapatite. Appears to form an integral part of the mineralized matrix. Probably important to cell-matrix interaction.,online information:Osteopontin entry,ANTM:Extensively phosphorylated on clustered serine residues.,PTM:N- and O-glycosylated.,similarity:Belongs to the osteopontin family.,subunit:Ligand for integrin alpha-V/beta-3.,

## Validation Data



Various whole cell lysates were separated by 4-20% SDS-PAGE, and the membrane was blotted with anti-Osteopontin (ANT0042R) antibody. The HRPconjugated Goat anti-Rabbit IgG(H + L) antibody was used to detect the antibody. Lane 1: A549 Lane 2: HepG2  
Predicted band size: 35kDa Observed band size: 60kDa

Human liver was stained with anti-Osteopontin (ANT0042R) rabbit antibody



For Research use only, not for diagnostics and clinical use  
Contact Antagene Inc Tel 1-866-964-2589 Email: [info@antageneinc.com](mailto:info@antageneinc.com)