



Mouse Monoclonal Antibody **CD21** conjugated to Sepharose Beads

CatalogNo: **ANT8280-M**

Size 200ul

Storage Store at 4 °C for frequent use

Description

This Antagene antibody is immobilized by the covalent reaction of hydrazinonicotinamide-modified antibody with formylbenzamide-modified beads. It is useful for immunoprecipitation.

CD21 (ANT0041R) Rabbit mAb

Formulation: Each vial contains 1mg/ml Magnetic Bead in PBS, pH 7.2, 0.05mg ANaN3.

Host Species

- Rabbit

Reactivity

- Human, Mouse, Rat,

Applications

- WB, IHC, IF, IP, ELISA

MW

- 113kD (Calculated)
- 155kD (Observed)

Isotype

- IgG, Kappa

Recommended Dilution Ratios

IP

Basic Information

Clonality

Monoclonal

Clone Number ANT0041R

Immunogen Information

Specificity Endogenous

Gene name CR2

Protein Name Complement receptor type 2

Organism	Gene ID	UniProt ID
Human	1380 ;	P20023 ;
Mouse		P19070 ;

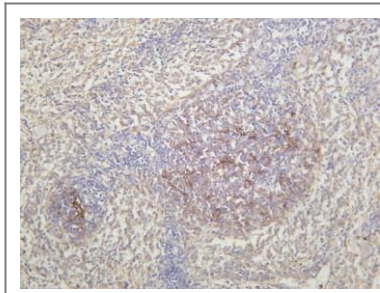
Cellular Localization Membrane

Tissue specificity Mature B-lymphocytes, T-lymphocytes, pharyngeal epithelial cells, astrocytes and follicular dendritic cells of the spleen.

Function Disease:Genetic variations in CR2 are associated with susceptibility to systemic lupus erythematosus type 9 (SLEB9) [MIM:610927]. Systemic lupus erythematosus (SLE) is a chronic autoimmune disease with a complex genetic basis. SLE is an inflammatory, and often febrile multisystemic disorder of connective tissue characterized principally by involvement of the skin, joints, kidneys, and serosal membranes. It is thought to represent a failure of the regulatory mechanisms of the autoimmune system.,Function:Receptor for complement C3Dd, for the Epstein-Barr virus on human B-cells and T-cells and for HNRPU. Participates in B lymphocytes activation.,similarity:Belongs to the receptors of complement activation (RCA) family.,similarity:Contains 15 Sushi (CCP/SCR) domains.,tissue specificity:Mature B-lymphocytes, T-lymphocytes, pharyngeal epithelial cells, astrocytes and follicular dendritic cells of the spleen.,

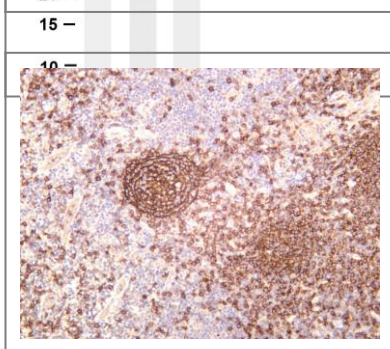
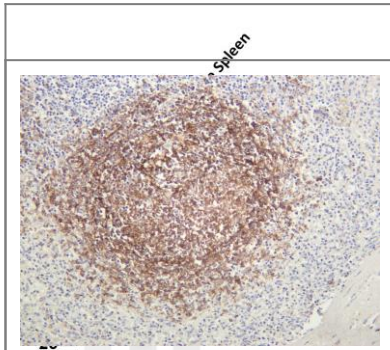
Validation Data

Rat spleen was stained with anti-CD21 (ANT0041R) rabbit antibody

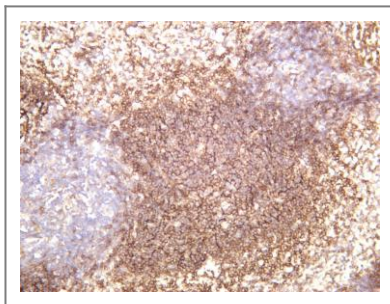


Various whole cell lysates were separated by 4-20% SDS-PAGE, and the membrane was blotted with anti-CD21 (ANT0041R) antibody. The HRPconjugated Goat anti-Rabbit IgG(H + L) antibody was used to detect the antibody. Lane 1: Raji Lane 2: Daudi Lane 3: Mouse Spleen Predicted band size: 113kDa Observed band size: 155kDa

Human spleen was stained with anti-CD21 (ANT0041R) rabbit antibody



Human tonsil was stained with anti-CD21 (ANT0041R) rabbit antibody



Mouse spleen was stained with anti-CD21 (ANT0041R) rabbit antibody

For Research use only, not for diagnostics and clinical use
Contact Antagene Inc Tel 1-866-964-2589 Email: info@antageneinc.com