

## Bag3 (ANT0037R) Rabbit mAb

CatalogNo: ANT8277 **Recombinant** 

Formulation: PBS,50%glycerol,0.05%Proclin 300,0.05%BSA  
Quantity : 100 ug/vial

### Host Species

- Rabbit
- Human,Mouse,Rat,

### Reactivity

- WB,IHC,IF,IP,ELISA

### Applications

### MW

- 62kD (Calculated)
- 80kD (Observed)

### Isotype

- IgG,Kappa

## Recommended Dilution Ratios

IHC 1:200-1:1000

WB 1:1000-1:5000

IF 1:200-1:1000

ELISA 1:5000-1:20000

IP 1:50-1:200

## Storage

**Storage\*** -15°C to -25°C/1 year(Do not lower than -25°C)

## Basic Information

**Clonality** Monoclonal

**Clone Number** ANT0037R

## Target Information

Endogenous

Gene name

BAG3

Protein Name

BAG family molecular chaperone regulator 3

Organism	Gene ID	UniProt ID
Human	<a href="#">9531</a> ;	<a href="#">O95817</a> ;
Mouse	<a href="#">29810</a> ;	<a href="#">Q9JLV1</a> ;

Cellular

Cytoplasm, Nucleus

Localization

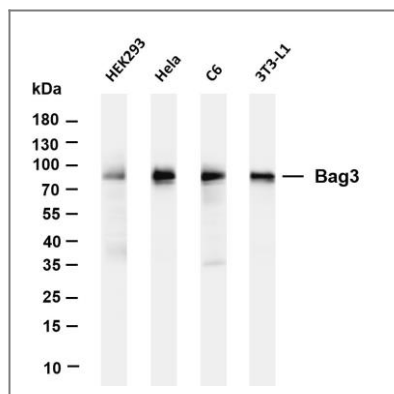
Tissue specificity

Brain,Epithelium,Liver,Lung,Placenta,T-cell,Testis,Tongue,

Function

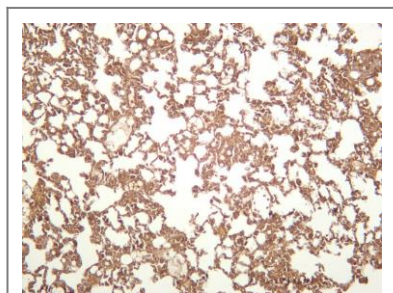
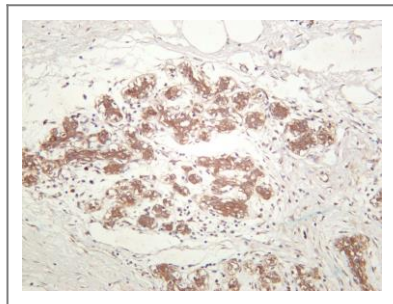
Function:Inhibits the chaperone activity of HSP70/HSC70 by promoting substrate release. Has anti-apoptotic activity.,similarity:Contains 1 BAG domain.,similarity:Contains 2 WW domains.,subunit:Binds to the ATPase domain of HSP70/HSC chaperones. Binds to Bcl-2 and PLC-gamma.,

## Validation Data

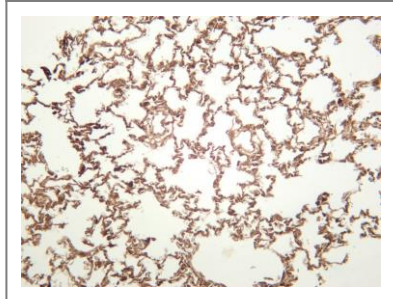


Various whole cell lysates were separated by 4-20% SDS-PAGE, and the membrane was blotted with anti-Bag3 (ANT0037R) antibody. The HRPconjugated Goat anti-Rabbit IgG(H + L) antibody was used to detect the antibody. Lane 1: HEK293 Lane 2: HeLa Lane 3: C6 Lane 4: 3T3-L1 Predicted band size: 62kDa Observed band size: 80kDa

Human breast carcinoma was stained with anti-Bag3 (ANT0037R) rabbit antibody



Mouse lung was stained with anti-Bag3 (ANT0037R) rabbit antibody



Rat lung was stained with anti-Bag3 (ANT0037R) rabbit antibody

For Research use only, not for diagnostics and clinical use  
Contact Antagene Inc Tel 1-866-964-2589 Email: [info@antageneinc.com](mailto:info@antageneinc.com)