

CD36 (ANT0034R) Rabbit mAb

CatalogNo: ANT8274 **Recombinant** 

Formulation: PBS,50%glycerol,0.05%Proclin 300,0.05%BSA
Quantity : 100 ug/vial

Host Species

- Rabbit
- Human,Mouse,Rat,

Reactivity

- WB,IHC,IF,IP,ELISA

Applications

MW

- 53kD (Calculated)
- 90kD (Observed)

Isotype

- IgG,Kappa

Recommended Dilution Ratios

IHC 1:1000-1:4000

WB 1:1000-1:5000

IF 1:200-1:1000

ELISA 1:5000-1:20000

IP 1:50-1:200

Storage

Storage* -15°C to -25°C/1 year(Do not lower than -25°C)

Basic Information

Clonality Monoclonal

Clone Number ANT0034R

Target Information

Immunogen Information Specificity

Endogenous

Gene name CD36
Protein Name Platelet glycoprotein 4

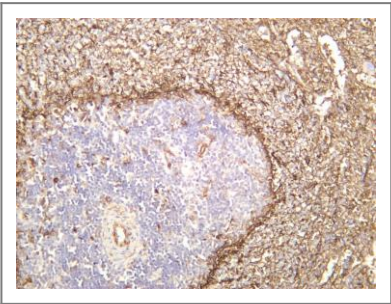
Organism	Gene ID	UniProt ID
Human	948 ;	P16671 ;
Mouse	12491 ;	Q08857 ;
Rat		Q07969 ;

Cellular Localization Membrane

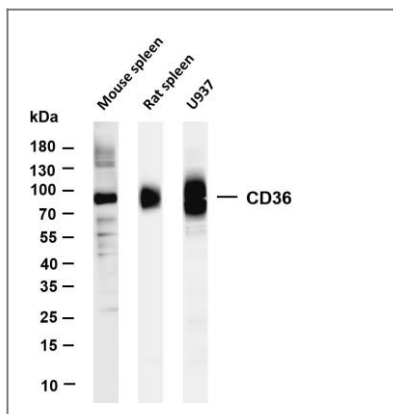
Tissue specificity Adipocyte,Liver,Mammary gland,Milk,Placenta,Platelet,Skeletal muscle,

Function Disease:Defects in CD36 are the cause of platelet glycoprotein IV deficiency [MIM:608404]; also known as CD36 deficiency. Platelet glycoprotein IV deficiency can be divided into 2 subgroups. The type I phenotype is characterized by platelets and monocytes/macrophages exhibiting complete CD36 deficiency. The type II phenotype lacks the surface expression of CD36 in platelets, but expression in monocytes/macrophages is near normal.,Disease:Genetic variations in CD36 are associated with susceptibility to coronary heart disease type 7 (CHDS7) [MIM:610938].,Function:Seems to have numerous potential physiological functions. Binds to collagen, thrombospondin, anionic phospholipids and oxidized LDL. May function as a cell adhesion molecule. Directly mediates cytoadherence of Plasmodium falciparum parasitized erythrocytes. Binds long chain fatty acids and may function in the transport and/or as a regulator of fatty acid transport.,online information:CD36 entry,polymorphism:Genetic variation in CD36 influences the severity and outcome of malaria infection.,ANTM:N-glycosylated and O-glycosylated with a ratio of 2:1.,similarity:Belongs to the CD36 family.,

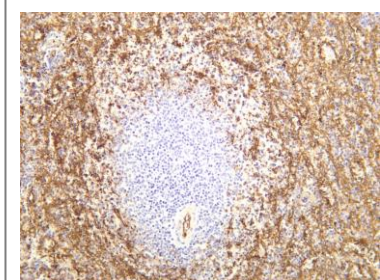
Validation Data



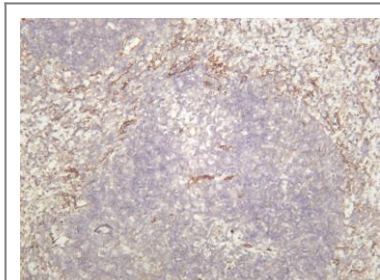
Rat spleen was stained with anti-CD36 (ANT0034R) rabbit antibody



Various whole cell lysates were separated by 4-20% SDS-PAGE, and the membrane was blotted with anti-CD36 (ANT0034R) antibody. The HRPconjugated Goat anti-Rabbit IgG(H + L) antibody was used to detect the antibody. Lane 1: Mouse spleen Lane 2: Rat spleen Lane 3: U937 Predicted band size: 53kDa Observed band size: 90kDa



Human spleen was stained with anti-CD36 (ANT0034R) rabbit antibody



Mouse spleen was stained with anti-CD36 (ANT0034R) rabbit antibody

For Research use only, not for diagnostics and clinical use
Contact Antagene Inc Tel 1-866-964-2589 Email: info@antageneinc.com