



## Mouse Monoclonal Antibody **CD36** conjugated to Sepharose Beads

CatalogNo: **ANT8274-S**

Size 200ul

Storage Store at 4 °C for frequent use

### Description

This Antagene antibody is immobilized via covalent binding of primary amino groups to N-hydroxysuccinimide (NHS)-activated sepharose beads. It is useful for immunoprecipitation assays.

### **CD36 (ANT0034R) Rabbit mAb**

Formulation: 50% slurry in PBS pH 7.2 with 0.01mg NaN<sub>3</sub> preservative.

#### Host Species

- Rabbit
- Human, Mouse, Rat,

#### Reactivity

- WB, IHC, IF, IP, ELISA

#### Applications

#### MW

- 53kD (Calculated)
- IgG, Kappa
- 90kD (Observed)

#### Isotype

## **Recommended Dilution Ratios**

### **IP**

## **Basic Information**

**Clonality** Monoclonal

**Clone Number** ANT0034R

# Immunogen Information

**Specificity** Endogenous

**Gene name** CD36

**Protein Name** Platelet glycoprotein 4

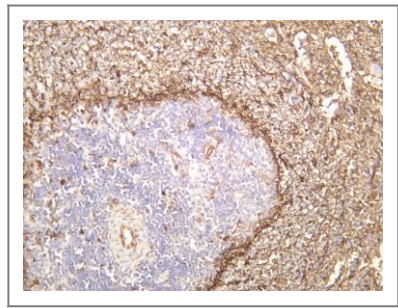
Organism	Gene ID	UniProt ID
Human	<a href="#">948</a> ;	<a href="#">P16671</a> ;
Mouse	<a href="#">12491</a> ;	<a href="#">Q08857</a> ;
Rat		<a href="#">Q07969</a> ;

**Cellular Localization** Membrane

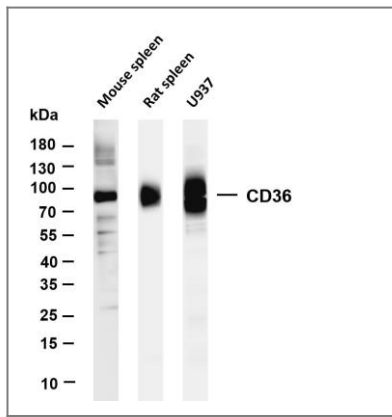
**Tissue specificity** Adipocyte,Liver,Mammary gland,Milk,Placenta,Platelet,Skeletal muscle,

**Function** Disease:Defects in CD36 are the cause of platelet glycoprotein IV deficiency [MIM:608404]; also known as CD36 deficiency. Platelet glycoprotein IV deficiency can be divided into 2 subgroups. The type I phenotype is characterized by platelets and monocytes/macrophages exhibiting complete CD36 deficiency. The type II phenotype lacks the surface expression of CD36 in platelets, but expression in monocytes/macrophages is near normal.,Disease:Genetic variations in CD36 are associated with susceptibility to coronary heart disease type 7 (CHDS7) [MIM:610938].,Function:Seems to have numerous potential physiological functions. Binds to collagen, thrombospondin, anionic phospholipids and oxidized LDL. May function as a cell adhesion molecule. Directly mediates cytoadherence of Plasmodium falciparum parasitized erythrocytes. Binds long chain fatty acids and may function in the transport and/or as a regulator of fatty acid transport.,online information:CD36 entry,polymorphism:Genetic variation in CD36 influences the severity and outcome of malaria infection.,ANTM:N-glycosylated and O-glycosylated with a ratio of 2:1.,similarity:Belongs to the CD36 family.,

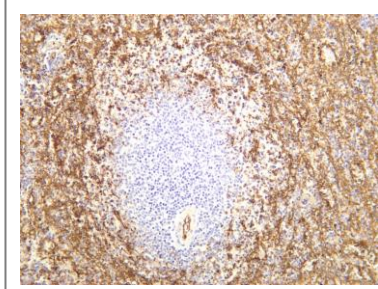
# Validation Data



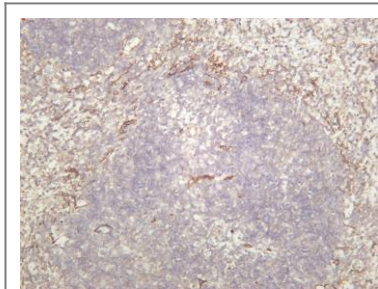
Rat spleen was stained with anti-CD36 (ANT0034R) rabbit antibody



Various whole cell lysates were separated by 4-20% SDS-PAGE, and the membrane was blotted with anti-CD36 (ANT0034R) antibody. The HRPconjugated Goat anti-Rabbit IgG(H + L) antibody was used to detect the antibody. Lane 1: Mouse spleen Lane 2: Rat spleen Lane 3: U937 Predicted band size: 53kDa Observed band size: 90kDa



Human spleen was stained with anti-CD36 (ANT0034R) rabbit antibody



Mouse spleen was stained with anti-CD36 (ANT0034R) rabbit antibody

For Research use only, not for diagnostics and clinical use  
Contact Antagene Inc Tel 1-866-964-2589 Email: [info@antageneinc.com](mailto:info@antageneinc.com)