

ITGB6 (ANT0028R) Rabbit mAb

CatalogNo: ANT8270 **Recombinant** 

Formulation: PBS,50%glycerol,0.05%Proclin 300,0.05%BSA
Quantity : 100 ug/vial

Host Species

- Rabbit
- Human,Mouse,Rat,

Reactivity

- WB,IHC,IF,IP,ELISA

Applications

MW

- 86kD (Calculated)
 - IgG,Kappa
- 86kD (Observed)

Isotype

Recommended Dilution Ratios

IHC 1:2000-1:10000

WB 1:1000-1:5000

IF 1:200-1:1000

ELISA 1:5000-1:20000

IP 1:50-1:200

Storage

Storage* -15°C to -25°C/1 year(Do not lower than -25°C)

Basic Information

Clonality Monoclonal

Clone Number ANT0028R

Target Information

Endogenous

Gene name ITGB6
Protein Name Integrin beta-6

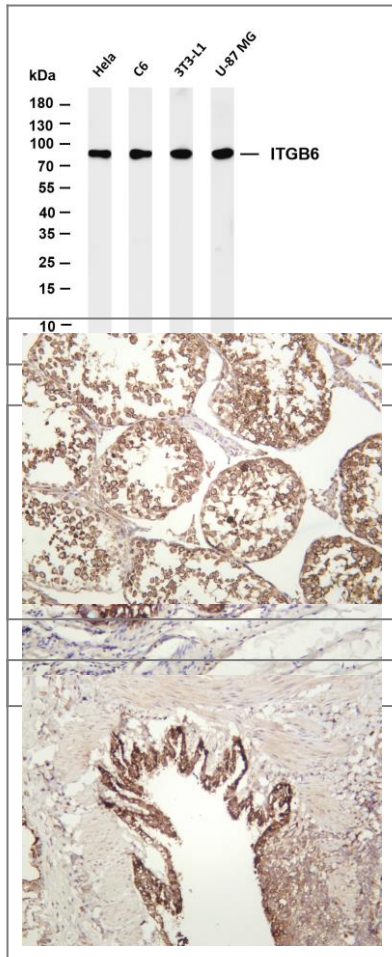
Organism	Gene ID	UniProt ID
Human	3694 ;	P18564 ;
Mouse		Q9Z0T9 ;
Rat		Q6AYF4 ;

Cellular Localization Membrane

Tissue specificity Keratinocyte,Pancreas,Skeletal muscle,

Function: Integrin alpha-V/beta-6 is a receptor for fibronectin and cytotactin. It recognizes the sequence R-G-D in its ligands.,similarity:Belongs to the integrin beta chain family.,similarity:Contains 1 VWFA domain.,subunit:Heterodimer of an alpha and a beta subunit. Beta-6 associates with alpha-V. Interacts with FLNB. Alpha-V/beta-6 binds to footand-mouth disease virus (FMDV) VP1 protein, coxsackievirus A9, coxsackievirus B1 capsid proteins and acts as a receptor for these viruses.,

Validation Data



Various whole cell lysates were separated by 4-20% SDS-PAGE, and the membrane was blotted with anti-ITGB6 (ANT0028R) antibody. The HRPconjugated Goat anti-Rabbit IgG(H + L) antibody was used to detect the antibody. Lane 1: HeLa Lane 2: C6 Lane 3: 3T3-L1 Lane 4: U-87 MG Predicted band size: 86kDa Observed band size: 86kDa

Human colon carcinoma was stained with anti-ITGB6 (ANT0028R) rabbit antibody
Mouse testis was stained with anti-ITGB6 (ANT0028R) rabbit antibody

Rat lung was stained with anti-ITGB6 (ANT0028R) rabbit antibody

For Research use only, not for diagnostics and clinical use
Contact Antagene Inc Tel 1-866-964-2589 Email: info@antageneinc.com