



Mouse Monoclonal Antibody **ITGB6** conjugated to Sepharose Beads

CatalogNo: **ANT8270-M**

Size 200ul

Storage Store at 4 °C for frequent use

Description

This Antagene antibody is immobilized by the covalent reaction of hydrazinonicotinamide-modified antibody with formylbenzamide-modified beads. It is useful for immunoprecipitation.

ITGB6 (ANT0028R) Rabbit mAb

Formulation: Each vial contains 1mg/ml Magnetic Bead in PBS, pH 7.2, 0.05mg ANaN3.

Host Species

- Rabbit
- Human, Mouse, Rat,

Reactivity

- WB, IHC, IF, IP, ELISA

Applications

MW

- 86kD (Calculated)
- 86kD (Observed)
- IgG, Kappa

Isotype

Recommended Dilution Ratios

IP

Basic Information

Clonality

Monoclonal

Clone Number ANT0028R

Immunogen Information

Specificity Endogenous

Gene name ITGB6

Protein Name Integrin beta-6

Organism	Gene ID	UniProt ID
Human	3694;	P18564;
Mouse		Q9Z0T9;
Rat		Q6AYF4;

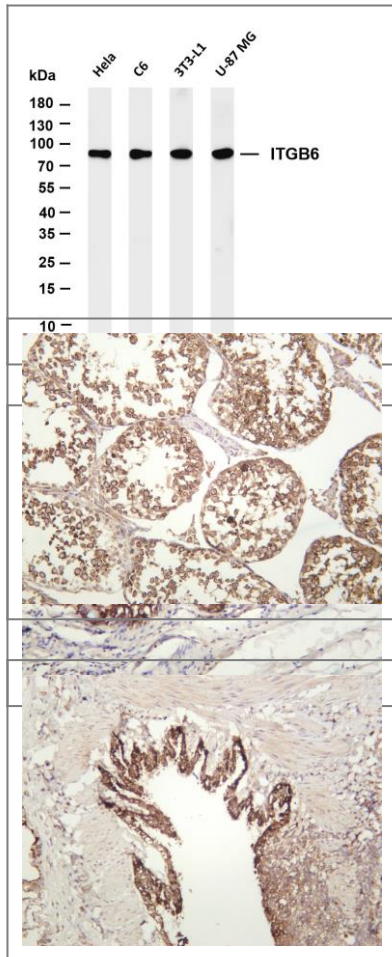
Cellular Membrane
Localization

Tissue specificity Keratinocyte,Pancreas,Skeletal muscle,

Function Function: Integrin alpha-V/beta-6 is a receptor for fibronectin and cytotactin. It recognizes the sequence R-G-D in its ligands.,similarity: Belongs to the integrin beta chain family.,similarity: Contains 1 VWFA domain.,subunit: Heterodimer of an alpha and a beta subunit. Beta-6 associates with alpha-V. Interacts with FLNB. Alpha-V/beta-6 binds to footand-mouth disease virus (FMDV) VP1 protein, coxsackievirus A9, coxsackievirus B1 capsid proteins and acts as a receptor for these viruses.,



Validation Data



Various whole cell lysates were separated by 4-20% SDS-PAGE, and the membrane was blotted with anti-ITGB6 (ANT0028R) antibody. The HRPconjugated Goat anti-Rabbit IgG(H + L) antibody was used to detect the antibody. Lane 1: HeLa Lane 2: C6 Lane 3: 3T3-L1 Lane 4: U-87 MG Predicted band size: 86kDa Observed band size: 86kDa

Human colon carcinoma was stained with anti-ITGB6 (ANT0028R) rabbit antibody
Mouse testis was stained with anti-ITGB6 (ANT0028R) rabbit antibody

Rat lung was stained with anti-ITGB6 (ANT0028R) rabbit antibody

For Research use only, not for diagnostics and clinical use
Contact Antagene Inc Tel 1-866-964-2589 Email: info@antageneinc.com