



## Mouse Monoclonal Antibody **Cytokeratin 19** conjugated to Sepharose Beads

CatalogNo: **ANT8269-S**

Size 200ul

Storage Store at 4 °C for frequent use

### Description

This Antagene antibody is immobilized via covalent binding of primary amino groups to N-hydroxysuccinimide (NHS)-activated sepharose beads. It is useful for immunoprecipitation assays.

## **Cytokeratin 19 (ANT0027R) Rabbit mAb**

Formulation: 50% slurry in PBS pH 7.2 with 0.01mg NaN<sub>3</sub> preservative.

### Host Species

- Rabbit
- Human, Mouse, Rat,

### Reactivity

- WB, IHC, IF, IP, ELISA

### Applications

### MW

- 40kD (Calculated)
- 40kD (Observed)
- IgG, Kappa

### Isotype

## **Recommended Dilution Ratios**

### IP

## **Basic Information**

**Clonality** Monoclonal

**Clone Number** ANT0027R

# Immunogen Information

**Specificity** Endogenous

**Gene name** KRT19

**Protein Name** Keratin type I cytoskeletal 19

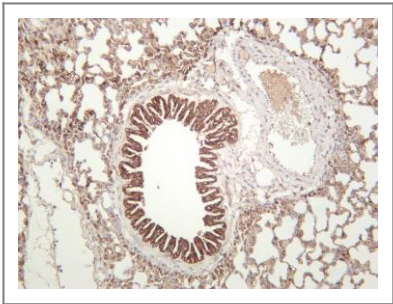
Organism	Gene ID	UniProt ID
Human	<a href="#">3880</a> ;	<a href="#">P08727</a> ;
Mouse	<a href="#">16669</a> ;	<a href="#">P19001</a> ;
Rat	<a href="#">360626</a> ;	<a href="#">Q63279</a> ;

**Cellular Localization** Cytoplasm

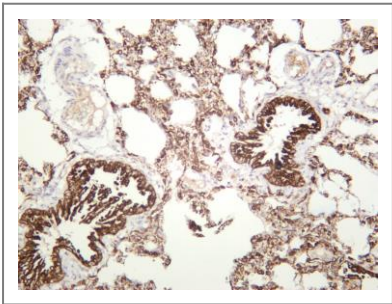
**Tissue specificity** Expressed in a defined zone of basal keratinocytes in the deep outer root sheath of hair follicles. Also observed in sweat gland and mammary gland ductal and secretory cells, bile ducts, gastrointestinal tract, bladder urothelium, oral epithelia, esophagus, ectocervical epithelium (at protein level). Expressed in epidermal basal cells, in nipple epidermis and a defined region of the hair follicle. Also seen in a subset of vascular wall cells in both the veins and artery of human umbilical cord, and in umbilical cord vascular smooth muscle. Observed in muscle fibers accumulating in the costameres of myoplasm at the sarcolemma in structures that contain dystrophin and spectrin.

**Function** developmental stage:Present in hair follicles at all stages of development.,Domain:This keratin differs from all other IF proteins in lacking the C-terminal tail domain.,Function:Involved in the organization of myofibers. Together with KRT8, helps to link the contractile apparatus to dystrophin at the costameres of striated muscle.,miscellaneous:There are two types of cytoskeletal and microfibrillar keratin: I (acidic; 40-55 kDa) and II (neutral to basic; 56-70 kDa).,similarity:Belongs to the intermediate filament family.,subunit:Heterotetramer of two type I and two type II keratins. Interacts with PNN and the actin-binding domain of DMD. Interacts with HCV core protein.,tissue specificity:Expressed in a defined zone of basal keratinocytes in the deep outer root sheath of hair follicles. Also observed in sweat gland and mammary gland ductal and secretory cells, bile ducts, gastrointestinal tract, bladder urothelium, oral epithelia, esophagus, ectocervical epithelium (at protein level). Expressed in epidermal basal cells, in nipple epidermis and a defined region of the hair follicle. Also seen in a subset of vascular wall cells in both the veins and artery of human umbilical cord, and in umbilical cord vascular smooth muscle. Observed in muscle fibers accumulating in the costameres of myoplasm at the sarcolemma in structures that contain dystrophin and spectrin.,

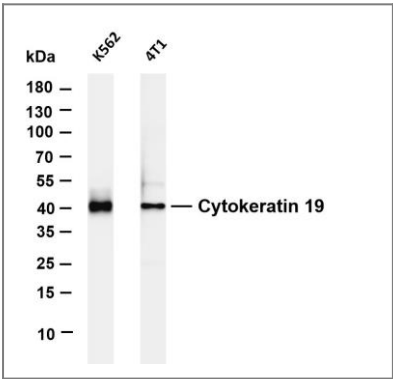
# Validation Data



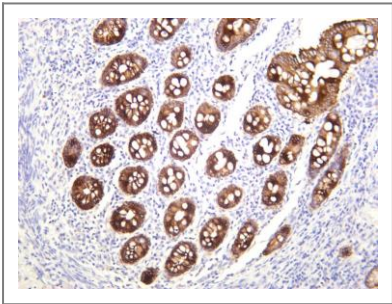
Mouse lung was stained with anti-Cytokeratin 19 (ANT0027R) rabbit antibody



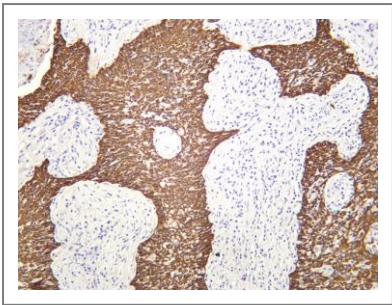
Rat lung was stained with anti-Cytokeratin 19 (ANT0027R) rabbit antibody



Various whole cell lysates were separated by 4-20% SDS-PAGE, and the membrane was blotted with anti-Cytokeratin 19 (ANT0027R) antibody. The HRP-conjugated Goat anti-Rabbit IgG(H + L) antibody was used to detect the antibody. Lane 1: K562 Lane 2: 4T1 Predicted band size: 40kDa Observed band size: 40kDa



Human colon carcinoma was stained with anti-Cytokeratin 19 (ANT0027R) rabbit antibody



Human lung was stained with anti-Cytokeratin 19 (ANT0027R) rabbit antibody

For Research use only, not for diagnostics and clinical use  
Contact Antagene Inc Tel 1-866-964-2589 Email: [info@antageneinc.com](mailto:info@antageneinc.com)