



YTHDF2 (ANT0026R) Rabbit mAb

CatalogNo: ANT8268 **Recombinant R**

Formulation: PBS,50%glycerol,0.05%Proclin 300,0.05%BSA
Quantity : 100 ug/vial

Host Species

- Rabbit
- Human,Mouse,Rat,

Reactivity

- WB,IHC,IF,IP,ELISA

Applications

MW

- 62kD (Calculated)
- 62kD (Observed)

Isotype

- IgG,Kappa

Recommended Dilution Ratios

IHC 1:200-1:1000

WB 1:1000-1:5000

IF 1:200-1:1000

ELISA 1:5000-1:20000

IP 1:50-1:200

Storage

Storage* -15°C to -25°C/1 year(Do not lower than -25°C)

Basic Information

Clonality Monoclonal

Clone Number ANT0026R

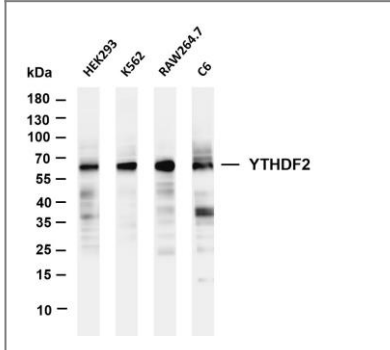
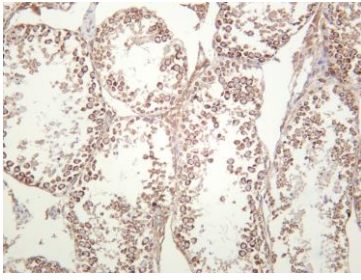
Target Information

Endogenous

Gene name	YTHDF2 HGRG8		
Protein Name	YTH domain family protein 2 (CLL-associated antigen KW-14) (High-glucose-regulated protein 8) (Renal carcinoma antigen NY-REN-2)		
	Organism	Gene ID	UniProt ID
	Human	51441 ;	Q9Y5A9 ;
Cellular Localization	Cytoplasm, Nucleus		
Tissue specificity	Highly expressed in induced pluripotent stem cells (iPSCs) and down-regulated during neural differentiation.		
Function	similarity:Contains 1 YTH domain.,		

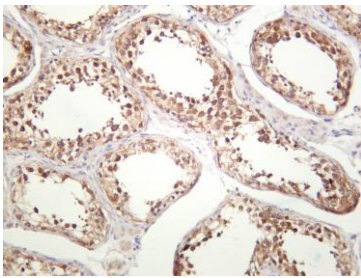
Validation Data

Mouse testis was stained with anti-YTHDF2 (ANT0026R) rabbit antibody



Various whole cell lysates were separated by 4-20% SDS-PAGE, and the membrane was blotted with anti-YTHDF2 (ANT0026R) antibody. The HRPconjugated Goat anti-Rabbit IgG(H + L) antibody was used to detect the antibody. Lane 1: HEK293 Lane 2: K562 Lane 3: RAW264.7 Lane 4: C6

Predicted band size: 62kDa Observed band size: 62kDa



Human testis was stained with anti-YTHDF2 (ANT0026R) rabbit antibody

For Research use only, not for diagnostics and clinical use
Contact Antagene Inc Tel 1-866-964-2589 Email: info@antageneinc.com