



Mouse Monoclonal Antibody **YTHDF2** conjugated to Sepharose Beads

CatalogNo: **ANT8268-M**

Size 200ul

Storage Store at 4 °C for frequent use

Description

This Antagene antibody is immobilized by the covalent reaction of hydrazinonicotinamide-modified antibody with formylbenzamide-modified beads. It is useful for immunoprecipitation.

YTHDF2 (ANT0026R) Rabbit mAb

Formulation: Each vial contains 1mg/ml Magnetic Bead in PBS, pH 7.2, 0.05mg ANaN3.

Host Species

- Rabbit
- Human, Mouse, Rat,

Reactivity

- WB, IHC, IF, IP, ELISA

Applications

MW

- 62kD (Calculated)
- 62kD (Observed)
- IgG, Kappa

Isotype

Recommended Dilution Ratios

IP

Basic Information

Clonality

Monoclonal

Clone Number ANT0026R

Immunogen Information

Specificity Endogenous

Gene name YTHDF2 HGRG8

Protein Name YTH domain family protein 2 (CLL-associated antigen KW-14) (High-glucose-regulated protein 8) (Renal carcinoma antigen NY-REN-2)

Organism	Gene ID	UniProt ID
Human	51441 ;	Q9Y5A9 ;

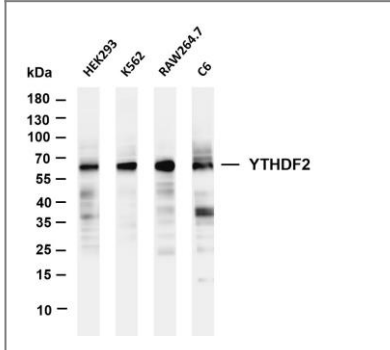
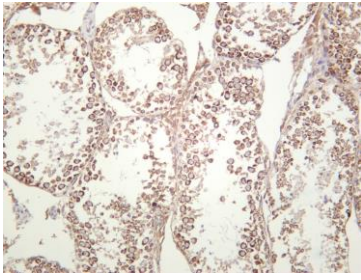
Cellular Localization Cytoplasm, Nucleus

Tissue specificity Highly expressed in induced pluripotent stem cells (iPSCs) and down-regulated during neural differentiation.

Function similarity:Contains 1 YTH domain.,

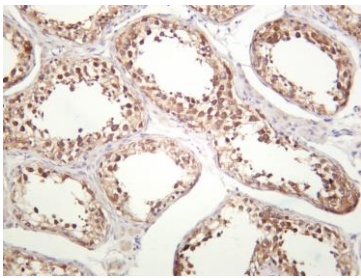
Validation Data

Mouse testis was stained with anti-YTHDF2 (ANT0026R) rabbit antibody



Various whole cell lysates were separated by 4-20% SDS-PAGE, and the membrane was blotted with anti-YTHDF2 (ANT0026R) antibody. The HRPconjugated Goat anti-Rabbit IgG(H + L) antibody was used to detect the antibody. Lane 1: HEK293 Lane 2: K562 Lane 3: RAW264.7 Lane 4: C6

Predicted band size: 62kDa Observed band size: 62kDa



Human testis was stained with anti-YTHDF2 (ANT0026R) rabbit antibody

For Research use only, not for diagnostics and clinical use
Contact Antagene Inc Tel 1-866-964-2589 Email: info@antageneinc.com