



Mouse Monoclonal Antibody **Ub** conjugated to Sepharose Beads

CatalogNo: **ANT8266-S**

Size 200ul

Storage Store at 4 °C for frequent use

Description

This Antagene antibody is immobilized via covalent binding of primary amino groups to N-hydroxysuccinimide (NHS)-activated sepharose beads. It is useful for immunoprecipitation assays.

Ub (ANT0024R) Rabbit mAb

Formulation: 50% slurry in PBS pH 7.2 with 0.01mg NaN₃ preservative.

Host Species

- Rabbit

MW

- 26kD (Calculated)
- 13-250kD (Observed)

Reactivity

- Human, Mouse, Rat,

Isotype

- IgG, Kappa

Applications

- WB, IHC, IF, IP, ELISA

Recommended Dilution Ratios

IP

Basic Information

Clonality Monoclonal

Clone Number ANT0024R

Immunogen Information

Specificity Endogenous

Gene name UBA52/RPS27A/UBB/UBC

Protein Name Ubiquitin

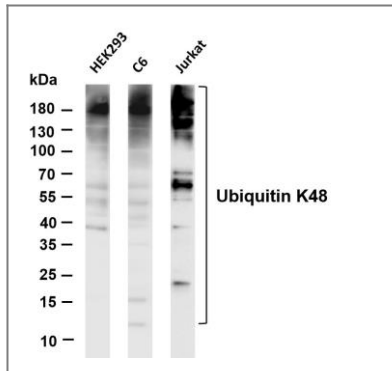
Organism	Gene ID	UniProt ID
Human	7311 ;	P0CG47 ; P0CG48 ; P62979 ; P62987 ;
Mouse	22187 ; 22190 ; 78294 ; 22186 ;	
Rat	192255 ; 50522 ; 100912032 ; 64156 ;	P0CG51 ; Q63429 ; P62982 ; P62986 ;

Cellular Localization Cytoplasm

Tissue specificity Brain,Epithelium,Fetal brain cortex,Liver,Lung,Lung adenocarcinoma,Lung cancer,Lymphocyte,P

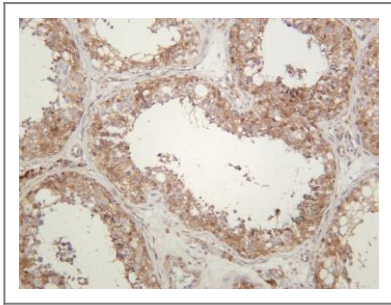
Function Function:Protein modifier which can be covalently attached to target lysines either as a monomer or as a lysine-linked polymer. Attachment to proteins as a Lys-48-linked polymer usually leads to their degradation by proteasome. Attachment to proteins as a monomer or as an alternatively linked polymer does not lead to proteasomal degradation and may be required for numerous functions, including maintenance of chromatin structure, regulation of gene expression, stress response, ribosome biogenesis and DNA repair.,miscellaneous:This ribosomal protein is synthesized as a C-terminal extension protein (CEP) of ubiquitin.,miscellaneous:Ubiquitin is synthesized as a polyubiquitin precursor with exact head to tail repeats, the number of repeats differ between species and strains. In some species there is a final amino-acid after the last repeat, here in human a Val. Some ubiquitin genes contain a single copy of ubiquitin fused to a ribosomal protein (either L40 or S27a).,ANTM:Several types of polymeric chains can be formed, depending on the lysine used for the assembly.,similarity:Belongs to the ribosomal protein S27Ae family.,similarity:Belongs to the ubiquitin family.,

Validation Data



Various whole cell lysates were separated by 4-20% SDS-PAGE, and the membrane was blotted with anti-Ubiquitin K48 (ANT0024R) antibody. The HRPconjugated Goat anti-Rabbit IgG(H + L) antibody was used to detect the antibody. Lane 1: HEK293 Lane 2: C6 Lane 3: Jurkat Predicted band size:

26kDa Observed band size: 13-250kDa



Human testis was stained with anti-Ubiquitin K48 (ANT0024R) rabbit antibody

For Research use only, not for diagnostics and clinical use
Contact Antagene Inc Tel 1-866-964-2589 Email: info@antageneinc.com