



Mouse Monoclonal Antibody **PP2A α/β** conjugated to Sepharose Beads

CatalogNo: **ANT8263-M**

Size 200ul

Storage Store at 4 °C for frequent use

Description

This Antagene antibody is immobilized by the covalent reaction of hydrazinonicotinamide-modified antibody with formylbenzamide-modified beads. It is useful for immunoprecipitation.

PP2A α/β (ANT0021R) Rabbit mAb

Formulation: Each vial contains 1mg/ml Magnetic Bead in PBS, pH 7.2, 0.05mg ANaN3.

Host Species

- Rabbit
- Human, Mouse, Rat,

Reactivity

- WB, IHC, IF, IP, ELISA

Applications

MW

- 36kD (Calculated)
- 36kD (Observed)
- IgG, Kappa

Isotype

Recommended Dilution Ratios

IP

Basic Information

Clonality

Monoclonal

Clone Number ANT0021R

Immunogen Information

Specificity Endogenous

Gene name PPP2CA;PPP2CB

Protein Name Serine/threonine-protein phosphatase 2A catalytic subunit alpha isoform;PP2A-beta;PP2Aalpha;Replication protein C;RP-C;

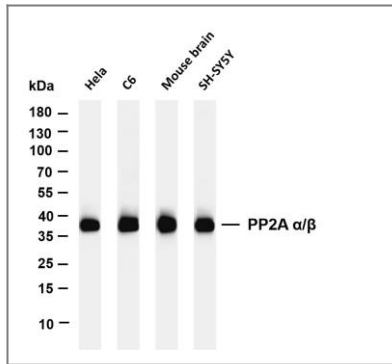
Organism	Gene ID	UniProt ID
Human	5515 ; 5516 ;	P67775 ; P62714 ;
Mouse	19052 ; 19053 ;	P63330 ; P62715 ;
Rat	24672 ; 24673 ;	P63331 ; P62716 ;

Cellular Localization Cytoplasm

Tissue specificity Fibroblast,Liver,Lung,Placenta,Testis,Uterus,baseline

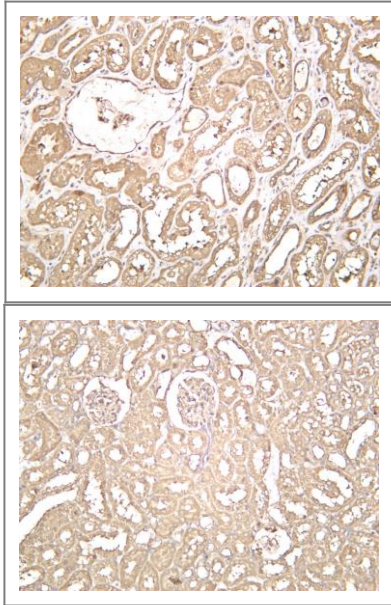
Function PP2A can modulate the activity of phosphorylase B kinase casein kinase 2, mitogenstimulated S6 kinase, and MAP-2 kinase. Cooperates with SGOL2 to protect centromeric cohesin from separase-mediated cleavage in oocytes specifically during meiosis I (By similarity). Can dephosphorylate SV40 large T antigen and p53/TP53. Dephosphorylates SV40 large T antigen, preferentially on serine residues 120, 123, 677, and perhaps 679. The C subunit was most active, followed by the AC form, which was more active than the ABC form, and activity of all three forms was strongly stimulated by manganese, and to a lesser extent by magnesium. Dephosphorylation by the AC form, but not C or ABC form is inhibited by small T antigen. Activates RAF1 by dephosphorylating it at 'Ser-259'.

Validation Data



Various whole cell lysates were separated by 4-20% SDS-PAGE, and the membrane was blotted with anti- PP2A α/β (ANT0021R) antibody. The HRPconjugated Goat anti-Rabbit IgG(H + L) antibody was used to detect the antibody. Lane 1: HeLa Lane 2: C6 Lane 3: Mouse brain Lane 4: SH-SY5Y
Predicted band size: 36kDa Observed band size: 36kDa

Human kidney was stained with anti-PP2A α/β (ANT0021R) rabbit antibody



Rat kidney was stained with anti-PP2A α/β (ANT0021R) rabbit antibody

For Research use only, not for diagnostics and clinical use
Contact Antagene Inc Tel 1-866-964-2589 Email: info@antageneinc.com