



Mouse Monoclonal Antibody **MIF** conjugated to Sepharose Beads

CatalogNo: **ANT8260-M**

Size 200ul

Storage Store at 4 °C for frequent use

Description

This Antagene antibody is immobilized by the covalent reaction of hydrazinonicotinamide-modified antibody with formylbenzamide-modified beads. It is useful for immunoprecipitation.

**MIF (ANT0018R) Rabbit mAb**

Formulation: Each vial contains 1mg/ml Magnetic Bead in PBS, pH 7.2, 0.05mg ANaN3.

**Host Species**

- Rabbit
- Human, Mouse, Rat,

**Reactivity**

- WB, IHC, IF, IP, ELISA

**Applications**

**MW**

- 13kD (Calculated)
- IgG, Kappa
- 13kD (Observed)

**Isotype**

## Recommended Dilution Ratios

### IP

## Basic Information

**Clonality**

Monoclonal

Clone Number      ANT0018R

**Immunogen Information**

**Specificity**      Endogenous

**Gene name**      MIF

**Protein Name**      Macrophage migration inhibitory factor

Organism	Gene ID	UniProt ID
Human	<a href="#">4282;</a>	<a href="#">P14174;</a>
Mouse	<a href="#">17319;</a>	<a href="#">P34884;</a>
Rat	<a href="#">81683;</a>	<a href="#">P30904;</a>

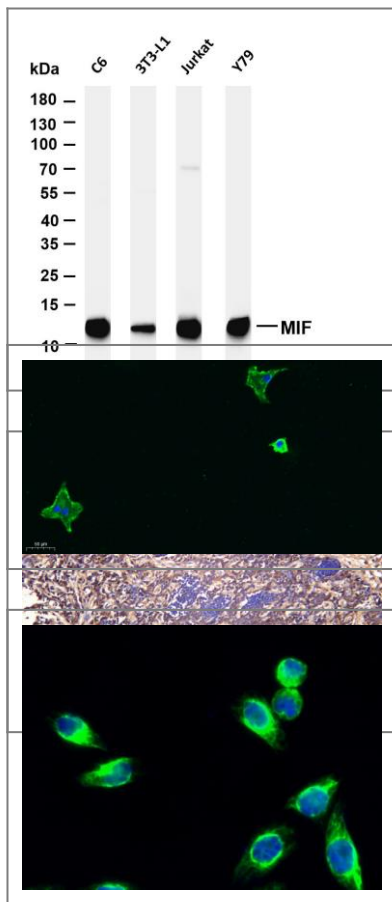
**Cellular Localization**      Cytoplasm

**Tissue specificity** Brain,Lens,Liver,Lung,Platelet,Skin

**Function**      Catalytic activity:Keto-phenylpyruvate = enol-phenylpyruvate.,Disease:Genetic variations in MIF are associated with susceptibility to systemic juvenile rheumatoid arthritis [MIM:604302]. Systemic juvenile rheumatoid arthritis is juvenile chronic arthritis associated with severe, debilitating, extraarticular features, and occasionally fatal complications. Despite medical treatment, many children still experience early joint destruction, necessitating surgical replacement.,Function:The expression of MIF at sites of inflammation suggest a role for the mediator in regulating the function of macrophage in host defense. Also acts as a phenylpyruvate tautomerase.,similarity:Belongs to the MIF family.,subunit:Homotrimer. Interacts with COPS5 and BNIPL.,

---

## Validation Data



Various whole cell lysates were separated by 4-20% SDS-PAGE, and the membrane was blotted with anti-MIF (ANT0018R) antibody. The HRPconjugated Goat anti-Rabbit IgG(H + L) antibody was used to detect the antibody. Lane 1: C6 Lane 2: 3T3-L1 Lane 3: Jurkat Lane 4: Y79 Predicted band size: 13kDa Observed band size: 13kDa

Human thymus was stained with anti-MIF (ANT0018R) rabbit antibody

Immunofluorescence analysis of A549. 1,primary Antibody was diluted at 1:200(4°C overnight). 2, Goat Anti Rabbit IgG (H&L) - Alexa Fluor 488 Secondary antibody was diluted at 1:1000(room temperature, 50min).3, Picture B: DAPI(blue) 10min.

Immunofluorescence analysis of HeLa cell. 1,MIF Antibody(green) was diluted at 1:200(4° overnight). 2, Goat Anti Rabbit Alexa Fluor 488 Catalog:RS3211 was diluted at 1:1000(room temperature, 50min). 3 DAPI(blue) 10min.

For Research use only, not for diagnostics and clinical use  
Contact Antagene Inc Tel 1-866-964-2589 Email: [info@antageneinc.com](mailto:info@antageneinc.com)