



## Mouse Monoclonal Antibody **TGF $\beta$ 1** conjugated to Sepharose Beads

CatalogNo: **ANT8257-M**

Size 200ul

Storage Store at 4 °C for frequent use

### Description

This Antagene antibody is immobilized by the covalent reaction of hydrazinonicotinamide-modified antibody with formylbenzamide-modified beads. It is useful for immunoprecipitation.

### **TGF $\beta$ 1 (ANT0015R) Rabbit mAb**

Formulation: Each vial contains 1mg/ml Magnetic Bead in PBS, pH 7.2, 0.05mg ANaN3.

#### Host Species

- Rabbit

#### Reactivity

- Human,Mouse,Rat,

#### Applications

- WB,IHC,IF,IP,ELISA

#### MW

- 44kD (Calculated)
- 44kD,13kD (Observed)

#### Isotype

- IgG,Kappa

## Recommended Dilution Ratios

### IP

## Basic Information

**Clonality** Monoclonal

**Clone Number** ANT0015R

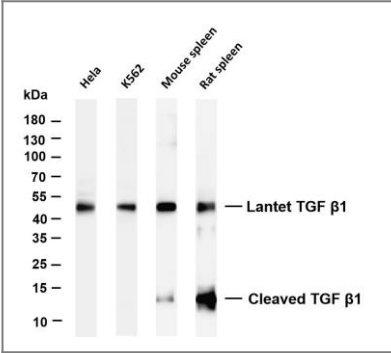
## Immunogen Information

**Specificity** Endogenous

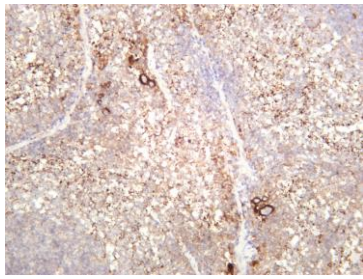
**Gene name** TGFB1 TGFB

Protein Name	Transforming growth factor beta-1 (TGF-beta-1) [Cleaved into: Latency-associated peptide (LAP)]		
	Organism	Gene ID	UniProt ID
	Human	<a href="#">7040;</a>	<a href="#">P01137;</a>
	Mouse	<a href="#">21803;</a>	<a href="#">P04202;</a>
	Rat	<a href="#">59086;</a>	<a href="#">P17246;</a>
Cellular Localization	Secreted		
Tissue specificity	Highly expressed in bone (PubMed:11746498, PubMed:17827158). Abundantly expressed in articular cartilage and chondrocytes and is increased in osteoarthritis (OA) (PubMed:11746498, PubMed:17827158). Colocalizes with ASPN in chondrocytes within OA lesions of articular cartilage (PubMed:17827158).		
Function	<p>Disease:Defects in TGFB1 are the cause of Camurati-Engelmann disease (CED) [MIM:131300]; also known as progressive diaphyseal dysplasia 1 (DPD1). CED is an autosomal dominant disorder characterized by hyperostosis and sclerosis of the diaphyses of long bones. The disease typically presents in early childhood with pain, muscular weakness and waddling gait, and in some cases other features such as exophthalmos, facial paralysis, hearing difficulties and loss of vision.,Function:Multifunctional protein that controls proliferation, differentiation and other functions in many cell types. Many cells synthesize TGFB1 and have specific receptors for it. It positively and negatively regulates many other growth factors. It plays an important role in bone remodeling as it is a potent stimulator of osteoblastic bone formation, causing chemotaxis, proliferation and differentiation in committed osteoblasts.,induction:Activated in vitro at pH below 3.5 and over 12.5.,online information:TGF beta-1 entry,polymorphism:In post-menopausal Japanese women, the frequency of Leu-10 is higher in subjects with osteoporosis than in controls.,ANTM:Glycosylated.,PTM:The precursor is cleaved into mature TGF-beta-1 and LAP, which remains non-covalently linked to mature TGF-beta-1 rendering it inactive.,similarity:Belongs to the TGF-beta family.,subunit:The inactive form consists of a TGFB1 homodimer non-covalently linked to a latency-associated peptide (LAP) homodimer. The inactive complex can contain a latent TGFB1-binding protein. The active form is a homodimer of mature TGFB1; disulfide-linked. Heterodimers of TGFB1/TGFB2 have been found in bone. Interacts with CD109 and DPT.,tissue specificity:Highly expressed in bone.,</p>		

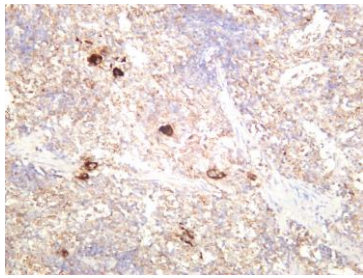
## Validation Data



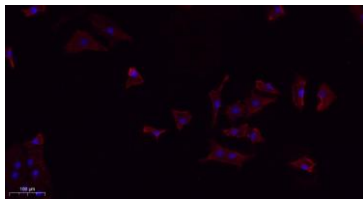
Various whole cell lysates were separated by 4-20% SDS-PAGE, and the membrane was blotted with anti-TGF β1 (ANT0015R) antibody. The HRPconjugated Goat anti-Rabbit IgG(H + L) antibody was used to detect the antibody. Lane 1: HeLa Lane 2: K562 Lane 3: Mouse spleen Lane 4: Rat spleen  
 Predicted band size: 44kDa Observed band size: 44,13kDa



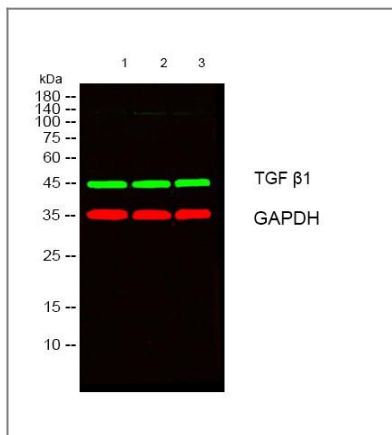
Mouse spleen was stained with anti-TGF  $\beta$ 1 (ANT0015R) rabbit antibody



Rat spleen was stained with anti-TGF  $\beta$ 1 (ANT0015R) rabbit antibody



Immunofluorescence analysis of A549. 1, primary Antibody (red) was diluted at 1:200 (4°C overnight). 2, Goat Anti Rabbit IgG (H&L) - Alexa Fluor 594 Secondary antibody was diluted at 1:1000 (room temperature, 50min). 3, Picture B: DAPI (blue) 10min.



Western blot analysis of lysates from 1) Mouse Brain, 2) HT29, 3) HepG2 cells,

(Green) primary antibody was diluted at 1:1000, 4°C over night, secondary antibody (cat:RS23920) was diluted at 1:10000, 37°C 1 hour. (Red)

GAPDH Monoclonal Antibody (2B8) (cat:YM3029) antibody was diluted at 1:5000 as loading control, 4°C over night, secondary antibody (cat:RS23710) was diluted at 1:10000, 37°C 1 hour.

For Research use only, not for diagnostics and clinical use  
Contact Antagene Inc Tel 1-866-964-2589 Email: [info@antageneinc.com](mailto:info@antageneinc.com)