



## GSK3 $\alpha/\beta$ (ANT0013R) Rabbit mAb

CatalogNo: ANT8255 **Recombinant** 

Formulation: PBS,50%glycerol,0.05%Proclin 300,0.05%BSA  
Quantity : 100 ug/vial

### Host Species

- Rabbit

### MW

- 51kD,47kD (Calculated)  
51kD,47kD (Observed)

### Reactivity

- Human,Mouse,Rat,

### Isotype

- IgG,Kappa

### Applications

- WB,IHC,IF,IP,ELISA

## Recommended Dilution Ratios

IHC 1:400-1:800

WB 1:2000-1:10000

IF 1:200-1:1000

ELISA 1:5000-1:20000

IP 1:50-1:200

## Storage

**Storage\*** -15°C to -25°C/1 year(Do not lower than -25°C)

## Basic Information

**Clonality** Monoclonal

**Clone Number** ANT0013R

## Target Information

## Immunogen Information Specificity

Endogenous

**Gene name** GSK3A/GSK3B

**Protein Name** Glycogen synthase kinase-3 alpha/beta

Organism	Gene ID	UniProt ID
Human	<a href="#">2931</a> ;	<a href="#">P49840</a> ; <a href="#">P49841</a> ;
Rat	<a href="#">50686</a> ; <a href="#">84027</a> ;	<a href="#">P18265</a> ; <a href="#">P18266</a> ;

**Cellular Localization** Cytoplasm

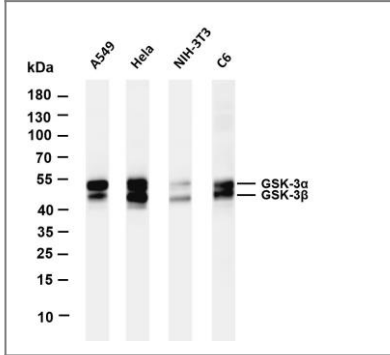
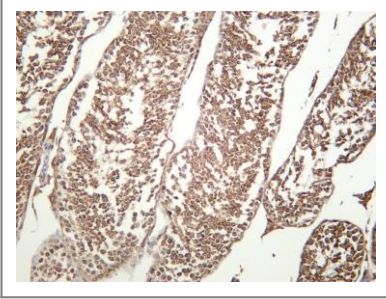
**Tissue specificity** Brain, Eye, Foreskin, Lung, Pancreas, Platelet, Testis,

**Function** Catalytic activity: ATP + [tau protein] = ADP + [tau protein] phosphate., Function: Implicated in the hormonal control of several regulatory proteins including glycogen synthase, MYB and the transcription factor JUN., similarity: Belongs to the protein kinase superfamily., similarity: Belongs to the protein kinase superfamily. CMGC Ser/Thr protein kinase family. GSK-3 subfamily., similarity: Contains 1 protein kinase domain., subunit: Monomer.,

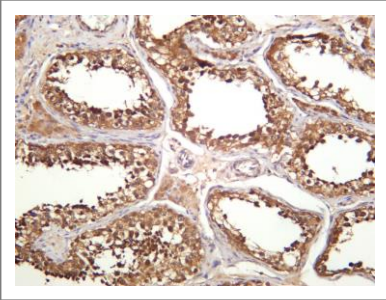
---

## Validation Data

Mouse testis was stained with anti-GSK3  $\alpha/\beta$  (ANT0013R) rabbit antibody



Various whole cell lysates were separated by 4-20% SDS-PAGE, and the membrane was blotted with anti-GSK3  $\alpha/\beta$  (ANT0013R) antibody. The HRPconjugated Goat anti-Rabbit IgG(H + L) antibody was used to detect the antibody. Lane 1: A549 Lane 2: HeLa Lane 3: NIH-3T3 Lane 4: C6 Predicted band size: 51,47kDa Observed band size: 51,47kDa



Human testis was stained with anti-GSK3  $\alpha/\beta$  (ANT0013R) rabbit antibody

For Research use only, not for diagnostics and clinical use  
Contact Antagene Inc Tel 1-866-964-2589 Email: [info@antageneinc.com](mailto:info@antageneinc.com)