



Mouse Monoclonal Antibody **GSK3  $\alpha/\beta$**  conjugated to Sepharose Beads

CatalogNo: **ANT8255-S**

Size 200ul

Storage Store at 4 °C for frequent use

### Description

This Antagene antibody is immobilized via covalent binding of primary amino groups to N-hydroxysuccinimide (NHS)-activated sepharose beads. It is useful for immunoprecipitation assays.

**GSK3  $\alpha/\beta$  (ANT0013R) Rabbit mAb**

Formulation: 50% slurry in PBS pH 7.2 with 0.01mg NaN<sub>3</sub> preservative.

#### Host Species

- Rabbit

#### MW

- 51kD,47kD (Calculated)  
51kD,47kD (Observed)

#### Reactivity

- Human,Mouse,Rat,

#### Isotype

- IgG,Kappa

#### Applications

- WB,IHC,IF,IP,ELISA

## Recommended Dilution Ratios

### IP

## Basic Information

#### Clonality

Monoclonal

Clone Number      ANT0013R

**Immunogen Information**

Specificity      Endogenous

Gene name      GSK3A/GSK3B

Protein Name      Glycogen synthase kinase-3 alpha/beta

Organism	Gene ID	UniProt ID
Human	<a href="#">2931</a> ;	<a href="#">P49840</a> ; <a href="#">P49841</a> ;
Rat	<a href="#">50686</a> ; <a href="#">84027</a> ;	<a href="#">P18265</a> ; <a href="#">P18266</a> ;

Cellular Localization      Cytoplasm

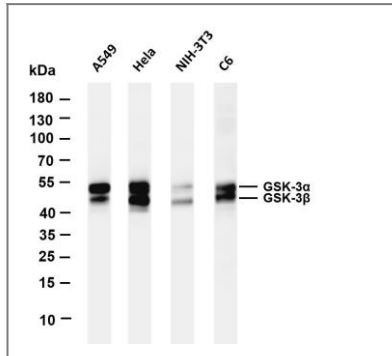
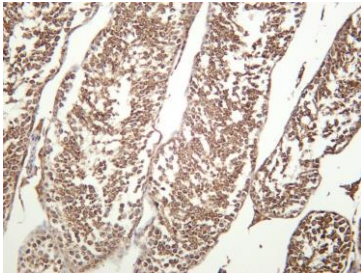
Tissue specificity Brain, Eye, Foreskin, Lung, Pancreas, Platelet, Testis,

Function      Catalytic activity:ATP + [tau protein] = ADP + [tau protein] phosphate.,Function:Implicated in the hormonal control of several regulatory proteins including glycogen synthase, MYB and the transcription factor JUN.,similarity:Belongs to the protein kinase superfamily.,similarity:Belongs to the protein kinase superfamily. CMGC Ser/Thr protein kinase family. GSK-3 subfamily.,similarity:Contains 1 protein kinase domain.,subunit:Monomer,

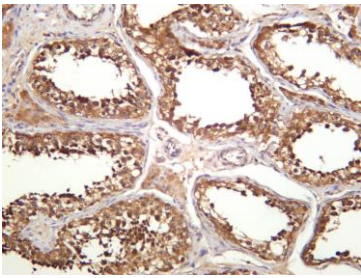


## Validation Data

Mouse testis was stained with anti-GSK3  $\alpha/\beta$  (ANT0013R) rabbit antibody



Various whole cell lysates were separated by 4-20% SDS-PAGE, and the membrane was blotted with anti-GSK3  $\alpha/\beta$  (ANT0013R) antibody. The HRPconjugated Goat anti-Rabbit IgG(H + L) antibody was used to detect the antibody. Lane 1: A549 Lane 2: HeLa Lane 3: NIH-3T3 Lane 4: C6 Predicted band size: 51,47kDa Observed band size: 51,47kDa



Human testis was stained with anti-GSK3  $\alpha/\beta$  (ANT0013R) rabbit antibody

For Research use only, not for diagnostics and clinical use  
Contact Antagene Inc Tel 1-866-964-2589 Email: [info@antageneinc.com](mailto:info@antageneinc.com)