



Mouse Monoclonal Antibody **GSK3 α/β** conjugated to Sepharose Beads

CatalogNo: **ANT8255-M**

Size 200ul

Storage Store at 4 °C for frequent use

Description

This Antagene antibody is immobilized by the covalent reaction of hydrazinonicotinamide-modified antibody with formylbenzamide-modified beads. It is useful for immunoprecipitation.

GSK3 α/β (ANT0013R) Rabbit mAb

Formulation: Each vial contains 1mg/ml Magnetic Bead in PBS, pH 7.2, 0.05mg ANaN3.

Host Species

- Rabbit

MW

- 51kD,47kD (Calculated)
51kD,47kD (Observed)

Reactivity

- Human,Mouse,Rat,

Isotype

- IgG,Kappa

Applications

- WB,IHC,IF,IP,ELISA

Recommended Dilution Ratios

IP

Basic Information

Clonality

Monoclonal

Clone Number ANT0013R

Immunogen Information

Specificity Endogenous

Gene name GSK3A/GSK3B

Protein Name Glycogen synthase kinase-3 alpha/beta

Organism	Gene ID	UniProt ID
Human	2931 ;	P49840 ; P49841 ;
Rat	50686 ; 84027 ;	P18265 ; P18266 ;

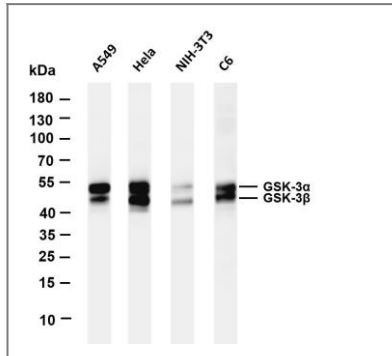
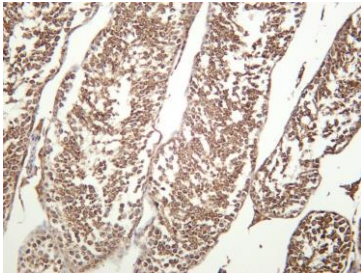
Cellular Localization Cytoplasm

Tissue specificity Brain, Eye, Foreskin, Lung, Pancreas, Platelet, Testis,

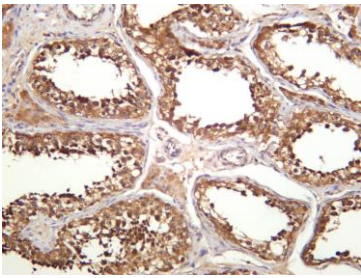
Function Catalytic activity:ATP + [tau protein] = ADP + [tau protein] phosphate.,Function:Implicated in the hormonal control of several regulatory proteins including glycogen synthase, MYB and the transcription factor JUN.,similarity:Belongs to the protein kinase superfamily.,similarity:Belongs to the protein kinase superfamily. CMGC Ser/Thr protein kinase family. GSK-3 subfamily.,similarity:Contains 1 protein kinase domain.,subunit:Monomer,

Validation Data

Mouse testis was stained with anti-GSK3 α/β (ANT0013R) rabbit antibody



Various whole cell lysates were separated by 4-20% SDS-PAGE, and the membrane was blotted with anti-GSK3 α/β (ANT0013R) antibody. The HRPconjugated Goat anti-Rabbit IgG(H + L) antibody was used to detect the antibody. Lane 1: A549 Lane 2: HeLa Lane 3: NIH-3T3 Lane 4: C6 Predicted band size: 51,47kDa Observed band size: 51,47kDa



Human testis was stained with anti-GSK3 α/β (ANT0013R) rabbit antibody

For Research use only, not for diagnostics and clinical use
Contact Antagene Inc Tel 1-866-964-2589 Email: info@antageneinc.com