



RRM1 (ANT0010R) Rabbit mAb

CatalogNo: ANT8253 **Recombinant** 

Formulation: PBS,50%glycerol,0.05%Proclin 300,0.05%BSA

Quantity : 100 ug/vial

Host Species

- Rabbit
- Human,Mouse,Rat,

Reactivity

- WB,IF,IP,ELISA

Applications

MW

- 90kD (Calculated)
- 90kD (Observed)

Isotype

- IgG,Kappa

Recommended Dilution Ratios

WB 1:1000-1:5000

IF 1:200-1:1000

ELISA 1:5000-1:20000

IP 1:50-1:200

Storage

Storage* -15°C to -25°C/1 year(Do not lower than -25°C)

Basic Information

Clonality Monoclonal

Clone Number ANT0010R

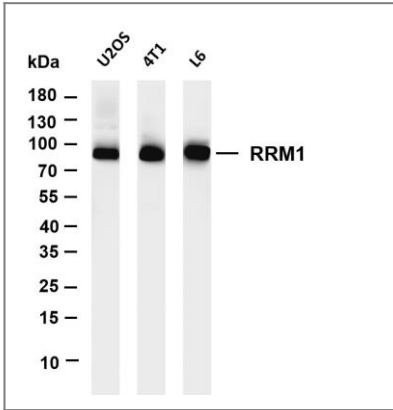
Immunogen Information

Specificity Endogenous

Target Information

Gene name	RRM1 RR1		
Protein Name	Ribonucleoside-diphosphate reductase large subunit (Ribonucleoside-diphosphate reductase subunit M1) (Ribonucleotide reductase large subunit)		
	Organism	Gene ID	UniProt ID
	Human	6240;	P23921;
	Mouse	20133;	P07742;
Cellular Localization	Cytoplasm		
Function	Provides the precursors necessary for DNA synthesis. Catalyzes the biosynthesis of deoxyribonucleotides from the corresponding ribonucleotides.		

Validation Data



Various whole cell lysates were separated by 4-20% SDS-PAGE, and the membrane was blotted with anti-RRM1 (ANT0010R) antibody. The HRPconjugated Goat anti-Rabbit IgG (H + L) antibody was used to detect the antibody. Lane 1: U2OS Lane 2: 4T1 Lane 3: L6
Predicted band size: 90kDa Observed band size: 90kDa

For Research use only, not for diagnostics and clinical use

Contact Antagene Inc Tel 1-866-964-2589 Email: info@antageneinc.com