



Mouse Monoclonal Antibody **RRM1** conjugated to Sepharose Beads

CatalogNo: **ANT8253-M**

Size 200ul

Storage Store at 4 °C for frequent use

Description

This Antagene antibody is immobilized by the covalent reaction of hydrazinonicotinamide-modified antibody with formylbenzamide-modified beads. It is useful for immunoprecipitation.

RRM1 (ANT0010R) Rabbit mAb

Formulation: Each vial contains 1mg/ml Magnetic Bead in PBS, pH 7.2, 0.05mg ANaN3.

Host Species

- Rabbit
- Human, Mouse, Rat,

Reactivity

- WB, IF, IP, ELISA

Applications

MW

- 90kD (Calculated)
- 90kD (Observed)
- IgG, Kappa

Isotype

Recommended Dilution Ratios

IP

Basic Information

Clonality	Monoclonal
-----------	------------

Clone Number ANT0010R

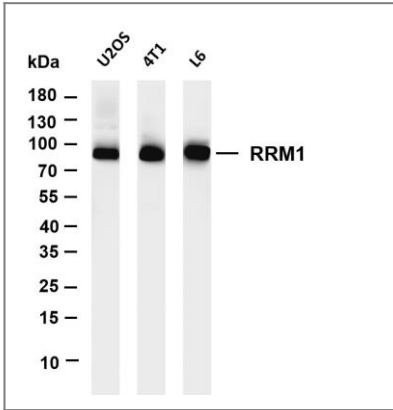
Immunogen Information

Specificity Endogenous

Target Information

Gene name	RRM1 RR1		
Protein Name	Ribonucleoside-diphosphate reductase large subunit (Ribonucleoside-diphosphate reductase subunit M1) (Ribonucleotide reductase large subunit)		
	Organism	Gene ID	UniProt ID
		Human	6240; P23921;
		Mouse	20133; P07742;
Cellular Localization	Cytoplasm		
Function	Provides the precursors necessary for DNA synthesis. Catalyzes the biosynthesis of deoxyribonucleotides from the corresponding ribonucleotides.		

Validation Data



Various whole cell lysates were separated by 4-20% SDS-PAGE, and the membrane was blotted with anti-RRM1 (ANT0010R) antibody. The HRPconjugated Goat anti-Rabbit IgG (H + L) antibody was used to detect the antibody. Lane 1: U2OS Lane 2: 4T1 Lane 3: L6
Predicted band size: 90kDa Observed band size: 90kDa

For Research use only, not for diagnostics and clinical use

Contact Antagene Inc Tel 1-866-964-2589 Email: info@antageneinc.com