



MelanA (ANT0008R) Rabbit mAb

CatalogNo: ANT8252 **Recombinant** 

Formulation: PBS,50%glycerol,0.05%Proclin 300,0.05%BSA
Quantity : 100 ug/vial

Host Species

- Rabbit
- Human,Mouse,

Reactivity

- WB,IHC,IF,IP,ELISA

Applications

MW

- 13kD (Calculated)
 - IgG,Kappa
- 18kD (Observed)

Isotype

Recommended Dilution Ratios

IHC 1:400-1:1000

WB 1:1000-1:5000

IF 1:200-1:1000

ELISA 1:5000-1:20000

IP 1:50-1:200

Storage

Storage* -15°C to -25°C/1 year(Do not lower than -25°C)

Basic Information

Clonality Monoclonal

Clone Number ANT0008R

Immunogen Information Specificity

Endogenous

Target Information

Gene name MLANA MART1
Protein Name Mart-1/Melan-A

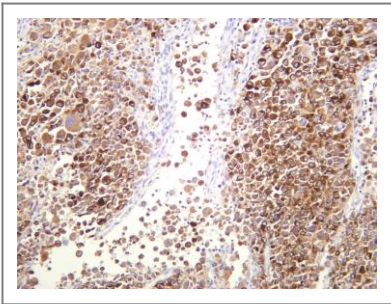
| Organism | Gene ID | UniProt ID |
|----------|-----------------------|-------------------------|
| Human | 2315; | Q16655; |

Cellular Localization Endoplasmic reticulum membrane

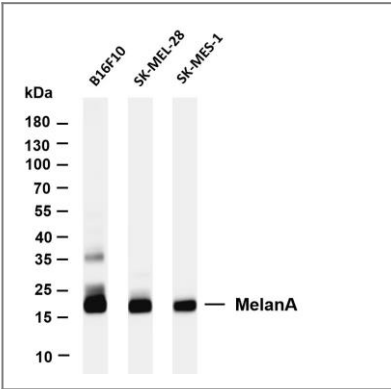
Tissue specificity Expression is restricted to melanoma and melanocyte cell lines and retina.

Function tissue specificity:Expression is restricted to melanoma and melanocyte cell lines and retina.,

Validation Data



Human melanoma was stained with anti-MelanA (ANT0008R) rabbit antibody



Various whole cell lysates were separated by 4-20% SDS-PAGE, and the membrane was blotted with anti-MelanA (ANT0008R) antibody. The HRPconjugated Goat anti-Rabbit IgG(H + L) antibody was used to detect the antibody. Lane 1: B16F10 Lane 2: SK-MEL-28 Lane 3: SK-MES-1 Predicted band size: 13kDa Observed band size: 18kDa

For Research use only, not for diagnostics and clinical use
Contact Antagene Inc Tel 1-866-964-2589 Email: info@antageneinc.com