



Mouse Monoclonal Antibody **MelanA** conjugated to Sepharose Beads

CatalogNo: **ANT8252-S**

Size 200ul

Storage Store at 4 °C for frequent use

Description

This Antagene antibody is immobilized via covalent binding of primary amino groups to N-hydroxysuccinimide (NHS)-activated sepharose beads. It is useful for immunoprecipitation assays.

MelanA (ANT0008R) Rabbit mAb

Formulation: 50% slurry in PBS pH 7.2 with 0.01mg NaN₃ preservative.

Host Species

- Rabbit
- Human, Mouse,

Reactivity

- WB, IHC, IF, IP, ELISA

Applications

MW

- 13kD (Calculated)
- 18kD (Observed)
- IgG, Kappa

Isotype

Recommended Dilution Ratios

IP

Basic Information

Clonality Monoclonal

Clone Number ANT0008R

Immunogen Information

Specificity Endogenous

Target Information

Gene name MLANA MART1
Protein Name Mart-1/Melan-A

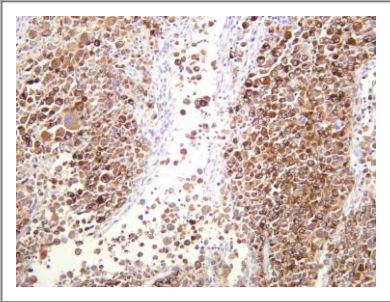
Organism	Gene ID	UniProt ID
Human	2315;	Q16655;

Cellular Localization Endoplasmic reticulum membrane

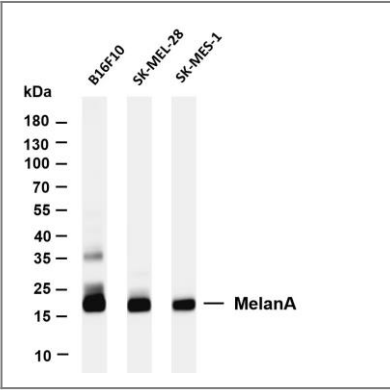
Tissue specificity Expression is restricted to melanoma and melanocyte cell lines and retina.

Function tissue specificity:Expression is restricted to melanoma and melanocyte cell lines and retina.,

Validation Data



Human melanoma was stained with anti-MelanA (ANT0008R) rabbit antibody



Various whole cell lysates were separated by 4-20% SDS-PAGE, and the membrane was blotted with anti-MelanA (ANT0008R) antibody. The HRPconjugated Goat anti-Rabbit IgG(H + L) antibody was used to detect the antibody. Lane 1: B16F10 Lane 2: SK-MEL-28 Lane 3: SK-MES-1 Predicted band size: 13kDa Observed band size: 18kDa

For Research use only, not for diagnostics and clinical use
Contact Antagene Inc Tel 1-866-964-2589 Email: info@antageneinc.com