



Mouse Monoclonal Antibody **MelanA** conjugated to Sepharose Beads

CatalogNo: **ANT8252-M**

Size 200ul

Storage Store at 4 °C for frequent use

### Description

This Antagene antibody is immobilized by the covalent reaction of hydrazinonicotinamide-modified antibody with formylbenzamide-modified beads. It is useful for immunoprecipitation.

**MelanA (ANT0008R) Rabbit mAb**

Formulation: Each vial contains 1mg/ml Magnetic Bead in PBS, pH 7.2, 0.05mg ANaN3.

### Host Species

- Rabbit
- Human, Mouse,

### Reactivity

- WB, IHC, IF, IP, ELISA

### Applications

### MW

- 13kD (Calculated)
- 18kD (Observed)
- IgG, Kappa

### Isotype

## Recommended Dilution Ratios

### IP

## Basic Information

**Clonality** Monoclonal

**Clone Number** ANT0008R

# Immunogen Information

Specificity      Endogenous

## Target Information

Gene name      MLANA MART1  
Protein Name      Mart-1/Melan-A

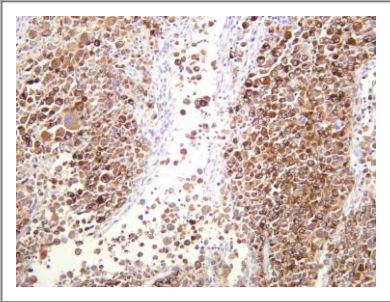
Organism	Gene ID	UniProt ID
Human	<a href="#">2315;</a>	<a href="#">Q16655;</a>

Cellular Localization      Endoplasmic reticulum membrane

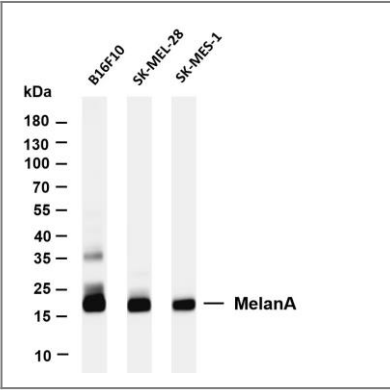
Tissue specificity Expression is restricted to melanoma and melanocyte cell lines and retina.

Function      tissue specificity:Expression is restricted to melanoma and melanocyte cell lines and retina.,

## Validation Data



Human melanoma was stained with anti-MelanA (ANT0008R) rabbit antibody



Various whole cell lysates were separated by 4-20% SDS-PAGE, and the membrane was blotted with anti-MelanA (ANT0008R) antibody. The HRPconjugated Goat anti-Rabbit IgG(H + L) antibody was used to detect the antibody. Lane 1: B16F10 Lane 2: SK-MEL-28 Lane 3: SK-MES-1 Predicted band size: 13kDa Observed band size: 18kDa

For Research use only, not for diagnostics and clinical use  
Contact Antagene Inc Tel 1-866-964-2589 Email: [info@antageneinc.com](mailto:info@antageneinc.com)