



## Mouse Monoclonal Antibody **Cdc2** conjugated to Sepharose Beads

CatalogNo: **ANT8251-M**

Size 200ul

Storage Store at 4 °C for frequent use

### Description

This Antagene antibody is immobilized by the covalent reaction of hydrazinonicotinamide-modified antibody with formylbenzamide-modified beads. It is useful for immunoprecipitation.

### **Cdc2 (ANT0006R) Rabbit mAb**

Formulation: Each vial contains 1mg/ml Magnetic Bead in PBS, pH 7.2, 0.05mg ANaN3.

#### Host Species

- Rabbit
- Human, Mouse,

#### Reactivity

- WB, IHC, IF, IP, ELISA

#### Applications

#### MW

- 34kD (Calculated)
  - IgG, Kappa
- 34kD (Observed)

#### Isotype

## **Recommended Dilution Ratios**

IP

### **Basic Information**

#### Clonality

Monoclonal

Clone Number      ANT0006R

Immunogen Information

Specificity      Endogenous

Gene name      CDK1

Protein Name      Cyclin-dependent kinase 1

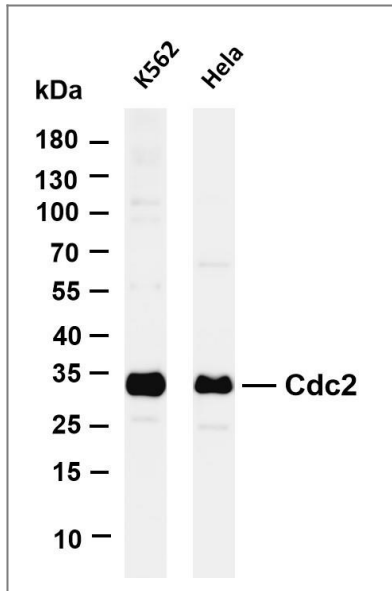
Organism	Gene ID	UniProt ID
Human	<a href="#">983</a> ;	<a href="#">P06493</a> ;
Mouse	<a href="#">12534</a> ;	<a href="#">P11440</a> ;
Rat	<a href="#">54237</a> ;	<a href="#">P39951</a> ;

Cellular Localization      Cytoplasm, Nucleus

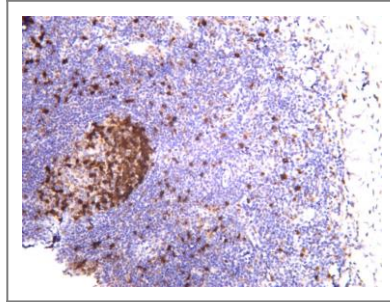
Tissue specificity Isoform 2 is found in breast cancer tissues.

**Function**      Catalytic activity:ATP + [DNA-directed RNA polymerase] = ADP + [DNA-directed RNA polymerase] phosphate.,Catalytic activity:ATP + a protein = ADP + a phosphoprotein.,enzyme regulation:Phosphorylation at Thr-14 or Tyr-15 inactivates the enzyme, while phosphorylation at Thr-161 activates it.,Function:Plays a key role in the control of the eukaryotic cell cycle. It is required in higher cells for entry into S-phase and mitosis. p34 is a component of the kinase complex that phosphorylates the repetitive Cterminus of RNA polymerase II.,similarity:Belongs to the protein kinase superfamily.,similarity:Belongs to the protein kinase superfamily. CMGC Ser/Thr protein kinase family. CDC2/CDKX subfamily.,similarity:Contains 1 protein kinase domain.,subunit:Forms a stable but non-covalent complex with a regulatory subunit and with a cyclin. Interacts with DLGAP5. Isoform 2 is unable to complex with cyclin B1 and also fails to bind to the CDK inhibitor p21. Interacts with catalytically active CCNB1 and RALBP1 during mitosis to form an endocytotic complex during interphase.,

## Validation Data



Various whole cell lysates were separated by 4-20% SDS-PAGE, and the membrane was blotted with anti-Cdc2 (ANT0006R) antibody. The HRPconjugated Goat anti-Rabbit IgG(H + L) antibody was used to detect the antibody. Lane 1: K562 Lane 2: HeLa Predicted band size: 34kDa Observed band size: 34kDa



rabbit antibody

Human tonsil was stained with anti-Cdc2 (ANT0006R)

For Research use only, not for diagnostics and clinical use  
Contact Antagene Inc Tel 1-866-964-2589 Email: [info@antageneinc.com](mailto:info@antageneinc.com)