



Mouse Monoclonal Antibody **CD14** conjugated to Sepharose Beads

CatalogNo: **ANT8248-M**

Size 200ul

Storage Store at 4 °C for frequent use

### Description

This Antagene antibody is immobilized by the covalent reaction of hydrazinonicotinamide-modified antibody with formylbenzamide-modified beads. It is useful for immunoprecipitation.

**CD14 (ANT0003R) Rabbit mAb**

Formulation: Each vial contains 1mg/ml Magnetic Bead in PBS, pH 7.2, 0.05mg ANaN3.

### Host Species

- Rabbit
- Human, Mouse, Rat,

### Reactivity

- WB, IHC, IF, IP, ELISA

### Applications

### MW

- 40kD (Calculated)
- IgG, Kappa
- 50kD (Observed)

### Isotype

## Recommended Dilution Ratios

### IP

## Basic Information

### Clonality

Monoclonal

Clone Number      ANT0003R

Immunogen Information

Specificity      Endogenous

Gene name      CD14

Protein Name      CD14

Organism	Gene ID	UniProt ID
Human	<a href="#">929;</a>	<a href="#">P08571;</a>
Mouse	<a href="#">12475;</a>	<a href="#">P10810;</a>
Rat	<a href="#">60350;</a>	<a href="#">Q63691;</a>

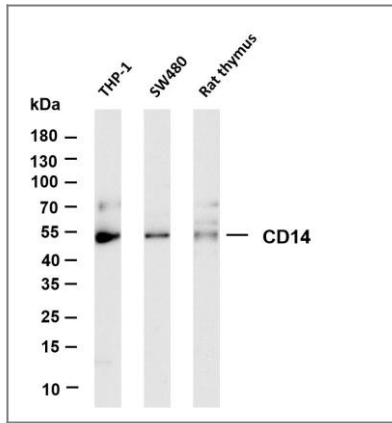
Cellular Localization      Membrane

Tissue specificity Detected on macrophages (at protein level) (PubMed:1698311). Expressed strongly on the surface of monocytes and weakly on the surface of granulocytes; also expressed by most tissue macrophages.

Function Function:Cooperates with MD-2 and TLR4 to mediate the innate immune response to bacterial lipopolysaccharide (LPS). Acts via MyD88, TIRAP and TRAF6, leading to NF-kappa-B activation, cytokine secretion and the inflammatory response. Up-regulates cell surface molecules, including adhesion molecules.,online information:CD14 entry,similarity:Contains 11 LRR (leucine-rich) repeats.,subunit:Belongs to the lipopolysaccharide (LPS) receptor, a multi-protein complex containing at least CD14, MD-2 and TLR4.,tissue specificity:Expressed strongly on the surface of monocytes and weakly on the surface of granulocytes; also expressed by most tissue macrophages.,

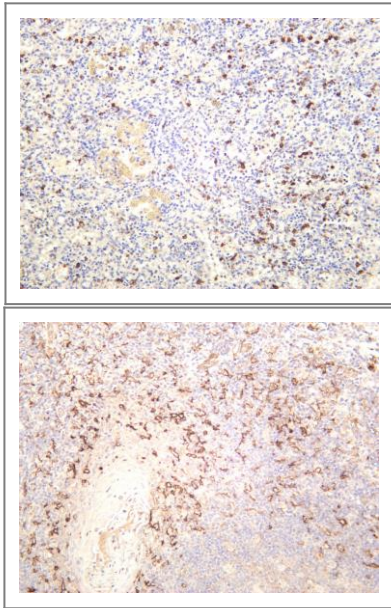


## Validation Data



Various whole cell lysates were separated by 4-20% SDS-PAGE, and the membrane was blotted with anti-CD14 (ANT0003R) antibody. The HRPconjugated Goat anti-Rabbit IgG(H + L) antibody was used to detect the antibody. Lane 1: THP-1 Lane 2: SW480 Lane 3: Rat thymus Predicted band size: 40kDa Observed band size: 50kDa

Human spleen was stained with anti-CD14 (ANT0003R) rabbit antibody



Human tonsil was stained with anti-CD14 (ANT0003R) rabbit antibody

---

For Research use only, not for diagnostics and clinical use  
Contact Antagene Inc Tel 1-866-964-2589 Email: [info@antageneinc.com](mailto:info@antageneinc.com)