



## Mouse Monoclonal Antibody **CDK4** conjugated to Sepharose Beads

CatalogNo: **ANT8244-S**

Size 200ul

Storage Store at 4 °C for frequent use

### Description

This Antagene antibody is immobilized via covalent binding of primary amino groups to N-hydroxysuccinimide (NHS)-activated sepharose beads. It is useful for immunoprecipitation assays.

### **CDK4 (ANT0099R) Rabbit mAb**

Formulation: 50% slurry in PBS pH 7.2 with 0.01mg NaN<sub>3</sub> preservative.

#### Host Species

- Rabbit
- Human, Mouse, Rat,

#### Reactivity

- WB, IHC, IF, IP, ELISA

#### Applications

#### MW

- 34kD (Calculated)
- 34kD (Observed)
- IgG, Kappa

#### Isotype

## Recommended Dilution Ratios

IP

### Basic Information

Clonality	Monoclonal
-----------	------------

Clone Number ANT0099R

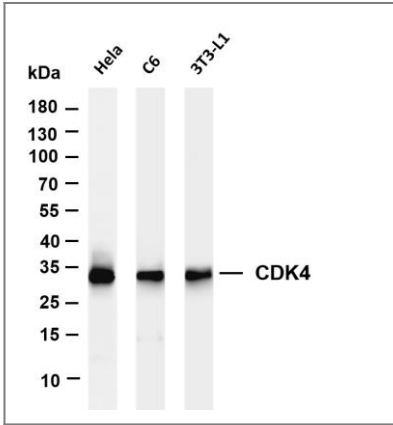
### Immunogen Information

Specificity Endogenous

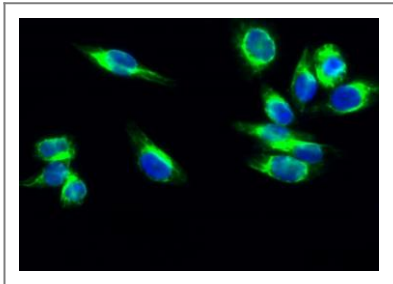
# Target Information

Gene name	CDK4		
Protein Name	Cyclin-dependent kinase 4		
Cellular Localization	Organism	Gene ID	UniProt ID
	Human	<a href="#">1019</a> ;	<a href="#">P11802</a> ;
	Mouse	<a href="#">12567</a> ;	<a href="#">P30285</a> ;
	Rat	<a href="#">94201</a> ;	<a href="#">P35426</a> ;
Tissue specificity	Brain,Muscle,		
Function	Catalytic activity:ATP + a protein = ADP + a phosphoprotein.,Disease:CDK4 mutations are involved in tumor formation.,Disease:Defects in CDK4 are the cause of cutaneous malignant melanoma 3 (CMM3) [MIM:609048, 155600]. Malignant melanoma is a malignant neoplasm of melanocytes, arising de novo or from a preexisting benign nevus, which occurs most often in the skin but also may involve other sites.,enzyme regulation:Phosphorylation at Thr-172 is necessary for enzymatic activity.,Function:Probably involved in the control of the cell cycle.,similarity:Belongs to the protein kinase superfamily. CMGC Ser/Thr protein kinase family. CDC2/CDKX subfamily.,similarity:Contains 1 protein kinase domain.,subunit:Forms a stable complex with D-type G1 cyclins. Interacts with SEI1 and ZNF655/VIK.,		

# Validation Data



Various whole cell lysates were separated by 4-20% SDS-PAGE, and the membrane was blotted with anti-CDK4 (ANT0099R) antibody. The HRPconjugated Goat anti-Rabbit IgG(H + L) antibody was used to detect the antibody. Lane 1: HeLa Lane 2: C6 Lane 3: 3T3-L1  
Predicted band size: 34kDa  
Observed band size: 34kDa



Immunofluorescence analysis of HeLa cell. 1,Cdk4 Antibody(green) was diluted at 1:200(4° overnight). 2, Goat Anti Rabbit Alexa Fluor 488 Catalog:RS3211 was diluted at 1:1000(room temperature, 50min). 3 DAPI(blue) 10min.

---

For Research use only, not for diagnostics and clinical use  
Contact Antagene Inc Tel 1-866-964-2589 Email: [info@antageneinc.com](mailto:info@antageneinc.com)