

Cytochrome C (ANT0094R) Rabbit mAb

CatalogNo: ANT8240 **Recombinant** 

Formulation: PBS,50%glycerol,0.05%Proclin 300,0.05%BSA
Quantity : 100 ug/vial

Host Species

- Rabbit
- Human,Mouse,Rat,

Reactivity

- WB,IHC,IF,IP,ELISA

Applications

MW

- 12kD (Calculated)
- 14kD (Observed)

Isotype

- IgG,Kappa

Recommended Dilution Ratios

IHC 1:1000-1:4000

WB 1:1000-1:5000

IF 1:200-1:1000

ELISA 1:5000-1:20000

IP 1:50-1:200,

Storage

Storage* -15°C to -25°C/1 year(Do not lower than -25°C)

Basic Information

Clonality Monoclonal

Clone Number ANT0094R

Target Information

Immunogen Information Specificity

Endogenous

Gene name CYCS CYC
Protein Name CYCS

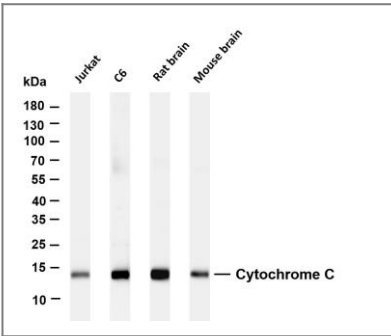
Organism	Gene ID	UniProt ID
Human	54205 ;	P99999 ;
Mouse	13063 ;	P62897 ;
Rat		P62898 ;

Cellular Localization Mitochondrion intermembrane space

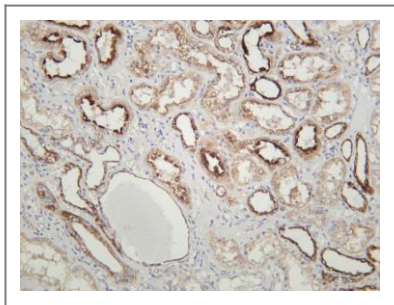
Tissue specificity Amygdala,Bone marrow,Brain,Embryo,Heart,Kidney,Lung,Skeletal muscle,Skin,Testis,Uri

Function Disease:Defects in CYCS are the cause of thrombocytopenia type 4 (THC4) [MIM:612004]; also known as autosomal dominant thrombocytopenia type 4. Thrombocytopenia is the presence of relatively few platelets in blood. THC4 is a non-syndromic form of thrombocytopenia. Clinical manifestations of thrombocytopenia are absent or mild. THC4 may be caused by dysregulated platelet formation.,Function:Electron carrier protein. The oxidized form of the cytochrome c heme group can accept an electron from the heme group of the cytochrome c1 subunit of cytochrome reductase. Cytochrome c then transfers this electron to the cytochrome oxidase complex, the final protein carrier in the mitochondrial electron-transport chain.,Function:Plays a role in apoptosis. Suppression of the antiapoptotic members or activation of the pro-apoptotic members of the Bcl-2 family leads to altered mitochondrial membrane permeability resulting in release of cytochrome c into the cytosol. Binding of cytochrome c to Apaf-1 triggers the activation of caspase-9, which then accelerates apoptosis by activating other caspases.,online information:Life shuttle - Issue 76 of November 2006,ANTM: Binds 1 heme group per subunit.,similarity:Belongs to the cytochrome c family.,

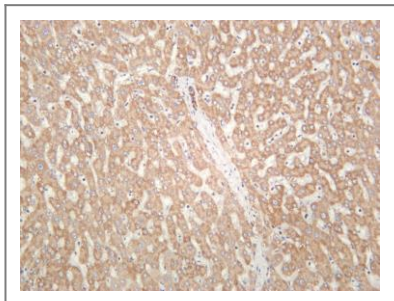
Validation Data



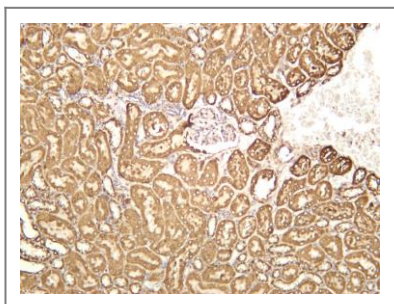
Various whole cell lysates were separated by 4-20% SDS-PAGE, and the membrane was blotted with anti-Cytochrome C (ANT0094R) antibody. The HRP-conjugated Goat anti-Rabbit IgG(H + L) antibody was used to detect the antibody. Lane 1: Jurkat Lane 2: C6 Lane 3: Rat brain Lane 4: Mouse brain
Predicted band size: 12kDa Observed band size: 14kDa



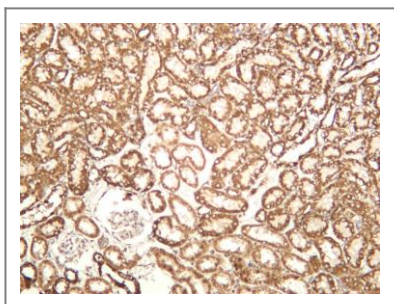
Human kidney was stained with anti-Cytochrome C (ANT0094R) rabbit antibody



Human liver was stained with anti-Cytochrome C (ANT0094R) rabbit antibody



Mouse kidney was stained with anti-Cytochrome C (ANT0094R) rabbit antibody



Rat kidney was stained with anti-Cytochrome C (ANT0094R) rabbit antibody

For Research use only, not for diagnostics and clinical use
Contact Antagene Inc Tel 1-866-964-2589 Email: info@antageneinc.com