



Mouse Monoclonal Antibody **p90RSK (phospho Ser380)** conjugated to Sepharose Beads

CatalogNo: **ANT8236-S**

Size 200ul

Storage Store at 4 °C for frequent use

### Description

This Antagene antibody is immobilized via covalent binding of primary amino groups to N-hydroxysuccinimide (NHS)-activated sepharose beads. It is useful for immunoprecipitation assays.

**p90RSK (phospho Ser380) (ANT0086R) Rabbit mAb**

Formulation: 50% slurry in PBS pH 7.2 with 0.01mg NaN<sub>3</sub> preservative.

### Host Species

- Rabbit
- Human, Mouse, Rat,

### Reactivity

- WB, IHC, IF, IP, ELISA

### Applications

### MW

- 83kD (Calculated)
  - IgG, Kappa
- 83kD (Observed)

### Isotype

## Recommended Dilution Ratios

### IP

## Basic Information

Clonality

Monoclonal

Clone Number      ANT0086R

**Immunogen Information**

**Specificity**      Endogenous

**Gene name**      RPS6KA1

**Protein Name**      Ribosomal protein S6 kinase alpha-1

Organism	Gene ID	UniProt ID
Human	<a href="#">6195;</a>	<a href="#">Q15418;</a>
Mouse		<a href="#">P18653;</a>
Rat	<a href="#">81771;</a>	<a href="#">Q63531;</a>

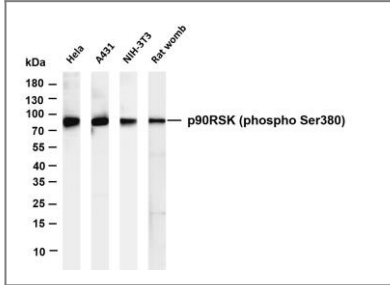
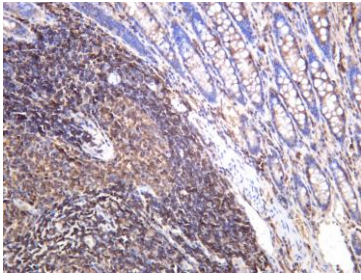
**Cellular Localization**      Cytoplasm, Nucleus

**Tissue specificity** Colon,Epithelium,

**Function**      Catalytic activity:ATP + a protein = ADP + a phosphoprotein.,Caution:The sequence shown here is derived from an Ensembl automatic analysis pipeline and should be considered as preliminary data.,cofactor:Magnesium.,enzyme regulation:Activated by multiple phosphorylations on threonine and serine residues.,Function:Serine/threonine kinase that may play a role in mediating the growth-factor and stress induced activation of the transcription factor CREB.,ANTM:Autophosphorylated on Ser-380, as part of the activation process.,similarity:Belongs to the protein kinase superfamily.,similarity:Belongs to the protein kinase superfamily. AGC Ser/Thr protein kinase family. S6 kinase subfamily.,similarity:Contains 1 AGC-kinase C-terminal domain.,similarity:Contains 2 protein kinase domains.,subunit:Forms a complex with either ERK1 or ERK2 in quiescent cells. Transiently dissociates following mitogenic stimulation.,

## Validation Data

Human colon carcinoma was stained with anti-p90RSK (phospho Ser380) rabbit antibody



Various whole cell lysates were separated by 4-20% SDS-PAGE, and the membrane was blotted with anti-p90RSK (phospho Ser380) (ANT0086R) antibody. The HRP-conjugated Goat anti-Rabbit IgG(H + L) antibody was used to detect the antibody. Lane 1: HeLa Lane 2: A431 Lane 3: NIH-3T3 Lane 4: Rat womb Predicted band size: 83kDa Observed band size: 83kDa

For Research use only, not for diagnostics and clinical use  
Contact Antagene Inc Tel 1-866-964-2589 Email: [info@antageneinc.com](mailto:info@antageneinc.com)